



# **GUISBOROUGH NEIGHBOURHOOD PLAN REFERENDUM**

## **Information Statement** (Including Information for Voters)

**Statement Published: 22 May 2026**

**Referendum Date: 2 July 2026**

## 1. Introduction

On **Thursday 2 July 2026** there will be a referendum on the Neighbourhood Plan for Guisborough. This statement explains more about the referendum and how you can take part in it, including information about:

- The planning system in England and the development plan;
- Neighbourhood plans;
- The Neighbourhood Area; and
- How to vote.

## 2. Referendum on the Neighbourhood Plan

A referendum asks you to vote 'Yes' or 'No' to a question.

The question which will be asked in this referendum is:

**“Do you want Redcar and Cleveland Borough Council and North York Moors National Park to use the Neighbourhood Plan for Guisborough to help it decide planning applications in the neighbourhood area?”**

If more people vote 'Yes' than 'No' in this referendum, then Redcar & Cleveland Borough Council and the North York Moors National Park Authority will use the Guisborough Civil Parish Neighbourhood Plan to help decide planning applications in the Guisborough Neighbourhood Area.

If more people vote 'No' than 'Yes' in this referendum, planning applications will continue to be decided using existing Development Plans and not the Guisborough Civil Parish Council Neighbourhood Plan 2025-2040.

## 3. What is the Planning System in England?

The planning system manages the use and development of land and buildings, with the aim of creating sustainable places to live and work. Potential development activity is managed through planning applications, using development plans as a basis to make decisions.

The National Planning Policy Framework (NPPF) sets out the Government's planning policies for England and how these are expected to be applied. The NPPF gives guidance to local planning authorities in drawing up development plans and on making decisions on planning applications. The NPPF includes a presumption in favour of sustainable development and sets out core planning principles, including environmental, social and economic aspects. Planning Practice Guidance supports the NPPF and provides further guidance on planning issues, including neighbourhood planning.

## **4. What is a Development Plan?**

Decisions on planning applications are made by local planning authorities. Those decisions must be made in accordance with the development plan for that authority, unless material considerations indicate otherwise. A development plan is a set of documents that contain policies for the development and use of land in a local planning authority area.

Redcar & Cleveland Borough Council are the local planning authority for the Guisborough Neighbourhood Area with the exception of an area which is encompassed within the North York Moors National Park, where the North York Moors National Park Authority are the local planning authority.

Within the Redcar & Cleveland Borough Council Local Planning Authority area the Development Plan comprises of the Redcar & Cleveland Local Plan (2018) and the Tees Valley Joint Minerals and Waste Core Strategy (2011) and Policies and Sites Development Plan Documents (2011), plus any made Neighbourhood Plans.

Within the North York Moors National Park, the Development Plan comprises of the North York Moors Local Plan (2020) and the Minerals and Waste Joint Plan (2022), plus any made Neighbourhood Plans.

## **5. What are Neighbourhood Plans?**

Neighbourhood planning powers were introduced in the Localism Act in 2011. They enable local communities to play a direct role in planning the areas in which they live and work.

Local communities prepare neighbourhood plans which show how they want land to be used and developed in their area. When a neighbourhood plan passes a local referendum, it will become part of the development plan and must be used to help in making decisions on planning applications in that area.

## **6. Who can prepare a Neighbourhood Plan?**

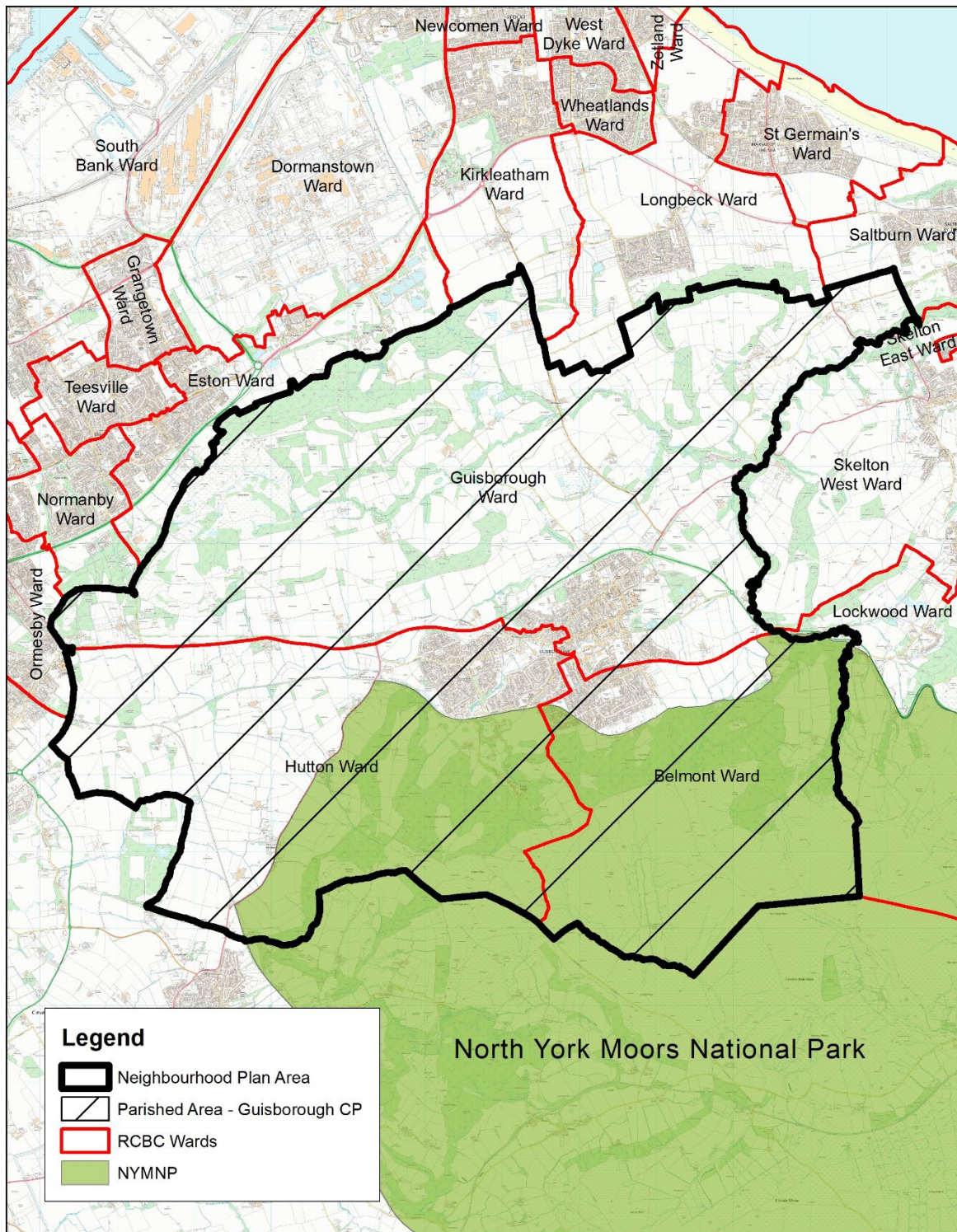
Where town or parish councils exist, they are the only organisations that can start the work of preparing a neighbourhood plan. Where there is no town or parish council a neighbourhood forum can be created to prepare a neighbourhood plan.



The Guisborough Civil Parish Neighbourhood Plan 2025 – 2040 has been prepared by Guisborough Town Council.

## **7. What is a Neighbourhood Area?**

Neighbourhood areas are defined for the purpose of neighbourhood planning; plans can only be created in formally designated neighbourhood areas.

In Guisborough, the neighbourhood area follows the parish boundaries of Guisborough Town Council which aligns with the Belmont, Guisborough and Hutton electoral ward boundaries.



 <b>Guisborough Neighbourhood Plan Area</b>		Date: 19/05/2026	Drawn by: DM
		Scale = 1:62,050	DWG No: PLNG846
Contains Ordnance Survey data © Crown Copyright and database rights 2026 (100019983)			

## 8. Can I vote?

You can vote in this referendum if, you live in the Guisborough Town Council area (which encompasses the Belmont, Guisborough and Hutton Wards), and are:

- Registered and entitled to vote in local council elections; and
- 18 years of age or older on Thursday 2 July 2026.

If you are not already registered to vote, applications to be included on the register of electors for this referendum must be received no later than Tuesday 16 June 2026.

Applications can be made online: [www.gov.uk/register-to-vote](http://www.gov.uk/register-to-vote)

## 9. Voting Methods

This referendum will be conducted in accordance with procedures similar to those used at local government elections.

You can vote in one of the following ways:

### In person

Votes can be cast at your allocated polling station on Thursday 2 July 2026 between the hours of 7am and 10pm.

A member of staff at the polling station will be able to assist if you if are not sure what to do. If you would like to discuss any accessibility requirements with us prior to polling day, please contact the Electoral Services Team by email:

ElectoralRegistration@redcar-cleveland.gov.uk or by telephone: 01642 774774

You will receive a poll card for this referendum, but you do not need to take your poll card with you to vote.

### By post:

If you already have postal voting arrangements in place, you will receive your postal vote about a week before polling day. You will receive a poll card confirming this.

If you need to make arrangements to vote by post, you can apply for a postal vote online at [www.gov.uk/apply-postal-vote](http://www.gov.uk/apply-postal-vote) applications must reach us by 5pm on Wednesday 17 June 2026.

Postal votes can be redirected to an address other than your home address, however a reason for this must be given and you will need to consider whether you have time to receive and return your completed postal vote.

### By proxy:

If you can't get to the polling station on Thursday 2 July 2026 and don't want to vote by post you may be able to vote by proxy. This requires you to appoint someone you know and trust to vote at your polling station on your behalf. In some circumstances, your proxy can apply to cast your vote by post.

When applying to vote by proxy you must provide a reason as to why you need to vote in this way.

Proxy vote applications can be made online at [www.gov.uk/apply-proxy-vote](http://www.gov.uk/apply-proxy-vote) or you can contact the Electoral Services Team (using the details above) to request a paper application form.

## **10. Voter Identification**

You must bring photographic identification to vote. You will not be able to vote unless you show photographic identification to the polling station staff.

A full list of accepted photographic identification is detailed on your Polling Card and can also be found on the Electoral Commission's website:

[www.electoralcommission.org.uk/voting-and-elections/voter-id/accepted-forms-photo-id](http://www.electoralcommission.org.uk/voting-and-elections/voter-id/accepted-forms-photo-id)

If you do not possess any of the required forms of photographic identification, you can apply for a free Voter Authority Certificate (VAC). The easiest way to do this is online at [www.gov.uk/apply-for-photo-id-voter-authority-certificate](http://www.gov.uk/apply-for-photo-id-voter-authority-certificate)

Applications for a VAC must be made by 5pm on Wednesday 24 June 2026.

## **11. Referendum expenses**

Expenses can be incurred by an individual or body organising a campaign during the period of the referendum for referendum purposes. There is a limit to the amount that campaigners can spend on their advertising for the referendum.

The Referendum expenses limit (as set out in Regulation 6 of the Neighbourhood Planning (Referendums) Regulations 2012) that will apply in relation to the Guisborough Civil Parish Neighbourhood Plan Referendum is £3226.88 to each campaign organiser. The number of persons entitled to vote in the Referendum by reference to which the limit has been calculated is 14,659 (set at 22 May 2026).

## **12. Specified documents to be published before Referendum**

Redcar & Cleveland Borough Council must make available a number of documents that are relevant to the referendum. These are called Specified Documents, and comprise of:

- The Guisborough Civil Parish Neighbourhood Plan 2025-2040,
- The Report of the Independent Examiner (March 2026),
- A summary of any representations submitted to the independent examiner,
- The Statement by the local planning authority confirming that the draft plan meets the basic conditions (Decision Statement), and

- This information statement, which includes general information about town and country planning including neighbourhood planning and the referendum.

These documents are available to view and download from the Council's website at <https://www.redcar-cleveland.gov.uk/planning/neighbourhood-planning/guisborough-neighbourhood-area-planning>.

Copies of these documents can be inspected at the following locations during the given times:

**Redcar Civic Centre**, Ridley Street, Redcar, TS10 1TD  
Monday – Friday: 8.30am – 5pm

**North York Moors National Park Authority**, Bondgate, Helmsley, YO62 5BP  
Monday – Friday: 9am – 5pm

**Redcar Library**, Kirkleatham Street, Redcar, TS10 1RT  
Monday: 10am - 2pm  
Tuesday/Wednesday: 9am - 5pm  
Thursday: 11am - 7pm  
Friday: 9am - 5pm  
Saturday: 10am - 2pm

**Guisborough Library**, 90 Westgate, Guisborough, TS14 6AP \*  
Monday: 11am - 7pm  
Tuesday/Wednesday/Thursday: 9am - 5pm  
Friday/Saturday: 10am - 2pm

\*Please note public access to Guisborough Library may be affected by scheduled refurbishment works. Please see the Council website for current opening times. Printed copies can be made available upon request for those who are entitled to vote and are unable to access the documents online or at one of the other locations.

### 13. Further details

Further general information on neighbourhood planning, including documents relating to the Guisborough Civil Parish Neighbourhood Plan can be found on the Council's website at <https://www.redcar-cleveland.gov.uk/planning/neighbourhood-planning/guisborough-neighbourhood-area-planning>

For queries about planning issues and neighbourhood planning, please contact Planning Strategy: [strategic.planning@redcar-cleveland.gov.uk](mailto:strategic.planning@redcar-cleveland.gov.uk) or 01287 612356.

For more information about voting arrangements for this referendum, please contact Electoral Services: [electoralregistration@redcar-cleveland.gov.uk](mailto:electoralregistration@redcar-cleveland.gov.uk) or 01642 774774.