



North York Moors
National Park

Strategic Environmental Assessment (SEA) Screening Assessment Guisborough Neighbourhood Plan October 2025

1. Introduction

- 1.1. Guisborough Town Council are currently preparing a Neighbourhood Plan for the Guisborough Parish area.
- 1.2. A Neighbourhood Plan must meet certain Basic Conditions, as set out in legislation. These include Directive 2001/42/EC or SEA Directive that has been transposed into UK law through the Environmental Assessment of Plans and Programmes Regulations 2004 (SEA Regulations).
- 1.3. A Strategic Environmental Assessment (SEA) is required for all Neighbourhood Plans which may result in likely significant environmental effects. Any Neighbourhood Plan submitted to the Council must be accompanied by either a statement of reasons as to why SEA was not required, or an environmental report as part of the SEA process.
- 1.4. Where a plan is judged likely to have significant environmental effects it is necessary to undertake an assessment of those effects in accordance with the processes set out in the SEA Directive and the SEA Regulations. In reaching that judgement on whether significant environmental effects are likely to arise from the introduction and implementation of a neighbourhood plan, a process known as 'screening' is required. This establishes whether, in the opinion of a responsible authority, the plan will require further assessment or not. Where a plan requires further assessment, this will result in the need to prepare an environmental report.
- 1.5. As the responsible authorities this Screening Assessment has been prepared by Redcar & Cleveland Borough Council, in consultation with the North York Moors National Park. This statement sets out the Authorities' determination of the need for a Strategic Environmental Assessment (SEA) in accordance with Regulation 9 of the Environmental Assessment of Plans and Programmes Regulations 2004 and European Directive 2001/42/EC.

2. Guisborough Neighbourhood Plan

- 2.1. Guisborough Town Council are currently preparing a Neighbourhood Plan for the Guisborough Parish area.
- 2.2. The Vision of the Neighbourhood Plan is to 'maintain Guisborough Parish as a community that is prosperous and attracts people to live, work, visit and spend more time here. Its unique character and plentiful leisure opportunities keep the parish as a key regional destination of choice. This continued success is built on a long history of warm hospitality and is supported by a vibrant local economy and effective public services.'
- 2.3. The aim of this Neighbourhood Plan is to 'identify and promote the aspects of Guisborough Parish which contribute towards our vision, and to address the issues which detract from our goal. The aim will be supported by:
 - Promoting the economic, social, health and environmental well-being of our community
 - Providing an opportunity for local people to influence local decision making through greater democratic participation
 - Collecting and analysing the views and opinions of the community to build on their local expertise, knowledge and insights to identify areas of potential improvement.'

2.4. The Neighbourhood Plan includes the following policies:

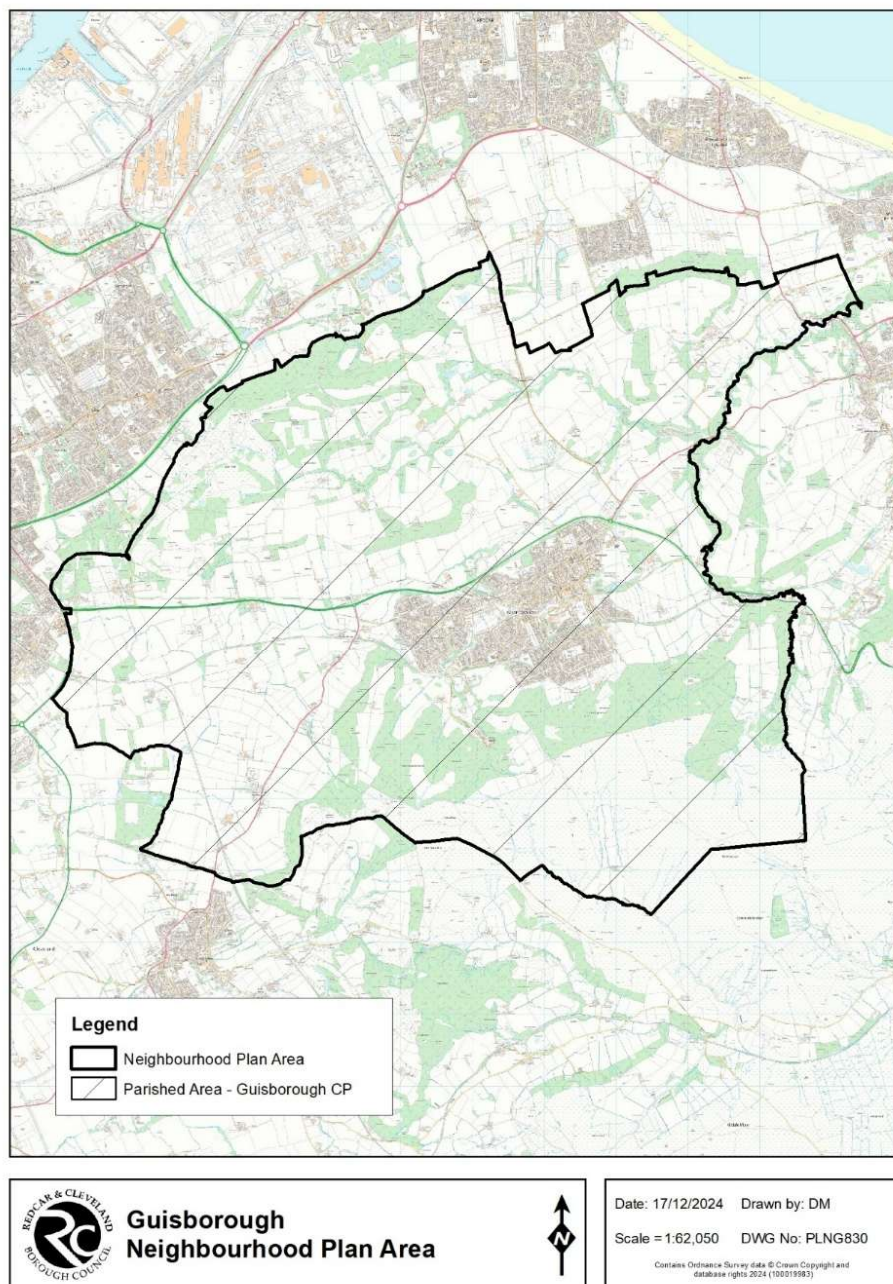
Table 1: Guisborough Neighbourhood Plan Policies

Neighbourhood Plan Policy	Description
Policy BE1: Housing Mix	This policy is designed to ensure that new housing development reflects identified local need, including over-represented elderly age-groups. It states that proposals designed to meet the needs of elderly or people with disabilities will be supported.
Policy BE2: Design Principles and Maintenance of Distinctive Character	This policy identifies the design principles which should be considered, where appropriate, as part of any development to maintain the distinctive character of the area.
Policy BE3: Provision of well-designed energy-efficient buildings and places	This policy seeks to ensure that new development aims to meet a high level of sustainable design and construction, such as being optimised for energy efficiency, targeting zero carbon emissions.
Policy GS1: Nightingale Road Park	Designates Nightingale Road Park as an 'open space'.
Policy GS2: The Branch Walkway	Designates The Branch Walkway from Kemplah Park to Belmangate as an 'open space'.
Policy GS3: Rufford Close Link	Designates Rufford Close Link as an 'open space'.
Policy GS4: Allotment Gardens	This policy seeks to designate four privately owned allotment gardens as 'open space'.
Policy GS5: Privately-owned Meadows	This policy seeks to designate a privately owned meadow as an 'open space' and two sites as a Local Green Space.
Policy GS6: Dorset Road Green	This policy designates Dorset Road Green as an 'open space'.
Policy GS7: Highway verges	This policy designates a number of highway verges as 'open spaces'.
Policy GS8: Amenity Spaces	This policy designates a number of amenity spaces as 'open spaces'.

3. The Guisborough Neighbourhood Plan Area

- 3.1. The Guisborough Neighbourhood Plan covers the Guisborough Parish area as identified in Figure 1 below. It includes the wards of Belmont, Guisborough and Hutton and includes the town of Guisborough plus neighbouring smaller villages of Newton under Roseberry, Dunsdale, Upleatham, Hutton Village and a very small part of Slapewath. It also includes a substantial surrounding rural and semi-rural areas. The majority of the area falls within Redcar & Cleveland Borough Council, with an area to the south, including Hutton Village on the edge of Guisborough, within the North York Moors National Park boundary and planning authority.

Figure 1: Guisborough Neighbourhood Plan Area



- 3.2. Part of the southern area of the Neighbourhood Plan lies within the North York Moors National Park, including part of the northern escarpment and some heather moorland. The North York Moors National Park has a duty to preserve its surroundings as well as the park itself. The main scarp slope of the North York Moors rises abruptly to the south of Guisborough to heights of over 1,000 feet (300m) at Highcliff Nab. Behind it, the open moorland plateau, with a general altitude of over 800 feet (240m), is free from glacial drift having only thin and poor soils overlaying the Jurassic sandstones and shales. The scarp slope is forested presenting a densely wooded, visually dominant backdrop to the settlement.
- 3.3. On the opposite side of the vale the Eston Hills are lower, between 400 and 700 feet (120m and 210m) and are covered with glacial drift which makes for better farming, leaving only the higher slopes as managed woodland and uncultivated moorland. The Eston Hills historic landscape is designated in the Redcar & Cleveland Local Plan which also identifies a number of sensitive landscape areas including Eston Hills, a number of tree lined beck valleys and the Guisborough Conservation area.
- 3.4. The majority of the Neighbourhood Plan area lies within the National Character Area: 25 - North York Moors and Cleveland Hills, with a smaller area to the west within National Character Area: 23 - Tees Lowlands.
- 3.5. The North York Moors Special Area of Conservation (SAC), is partially located within the south of the Neighbourhood Plan area. The SAC contains the largest continuous tract of upland heather moorland in England. Dry heath covers over half the site and forms the main vegetation type on the western, southern and central moors where the soil is free-draining and has only a thin peat layer. Wetter, more peaty areas support wet heath communities, and areas of blanket bog. The transition from dry heathland to blanket bog is complemented by a diverse mosaic of wet heath and flush communities. (North York Moors SAC Citation, JNCC). The North York Moors Special Protection Area (SPA) shares the same boundaries and has been designated as it supports approximately 3 percent of the Great British breeding population of Merlin - *Falco columbarius* and Golden Plover - *Pluvialis apricaria*. In addition, the SPA supports a rich upland breeding bird assemblage. (North York Moors SPA Citation, 2000). The North York Moors SAC and SPA cover the same geographical area.
- 3.6. Sites of Special Scientific Interest (SSSIs) in the Neighbourhood Plan area include North York Moors, Lovell Hill Pools, Langbaugh Ridge and Roseberry Topping (part). There are also a number of Local Sites across the more rural parts of Neighbourhood Plan area and the Guisborough Branch Walkway Local Nature Reserve.
- 3.7. Parts of the west of the Neighbourhood Plan area fall within the River Tees Nutrient Neutrality catchment area. The Teesmouth and Cleveland Coast Special Protection Area/Ramsar Evidence Pack August 2022 (TIN204) confirms that this protected area is currently in an unfavourable condition due to nutrient enrichment, which includes pollution from nitrates, including Nitrogen. Development proposals which result in an increase in nitrogen discharge into the River Tees may, therefore, have an adverse effect upon the SPA through increasing nutrient pollution. Recreational disturbance has also been identified as an issue on the site, however this has been addressed through the Redcar and Cleveland Local Plan and the Teesmouth & Cleveland Coast SPA Recreation Management Plan.
- 3.8. Many of the settlements in the Neighbourhood Plan area were originally influenced by the minerals which lay beneath it, particularly ironstone. In more recent periods Guisborough has expanded and has performed a role as a 'dormitory' to the wider Teesside area with extensions

to the town through a number of housing developments on the edge of the town. The main centre of Guisborough is designated as a Conservation Area (CA) and includes a number of listed 'landmark' buildings such as the Town Hall, Market Cross and churches. The CA also includes Guisborough priory ruins (Scheduled Ancient Monument) which are a most notable, highly significant and visually prominent feature of the town, Gisborough Hall and open parkland.

- 3.9. Within the smaller villages the majority of Upleatham is designated as a Conservation Area with a number of listed buildings centred on the main road. Newton under Roseberry lies at the base of Roseberry Topping and includes a number of sandstone cottages, a church, village green and includes some listed buildings. Dunsdale village comprises of two rows of cottages built to accommodate workers of the adjacent ironstone mine, and listed Dundale Farm buildings.
- 3.10. The Census 2021 lists the population of Guisborough Parish as 19,000 people. The age profile of the population is skewed towards an older age profile with all the age groups below 50s under-represented and those above over-represented.

4. SEA Screening Assessment

Part 1: Is SEA Required

- 4.1 The table below Table 1 sets out how the guidance provided in Paragraph 2.18 of the Government's 'Practical Guide to the Strategic Environmental Assessment Directive' has been applied. This suggests a flowchart of questions to determine whether SEA is required.

Table 2: Practical Guide to the Strategic Environmental Directive: Is SEA Required

Assessment Question	Commentary	Conclusion
Question 1 Is the Neighbourhood Plan (NP) subject to preparation and/or adoption by a national, regional or local authority OR prepared by an authority for adoption through a legislative procedure by Parliament or Government? (Art. 2(a))	The preparation and adoption of the Plan is allowed under the Town and Country Planning Act 1990 as amended by the Localism Act 2011. The Plan is prepared by Guisborough Town Council (as the relevant body) and will be "made" by the Redcar & Cleveland Borough Council and North York Moors National Park Authority (as the Local Authorities). The preparation of Neighbourhood Plans is subject to the following regulations: The Neighbourhood Planning (General) Regulations 2012 and the Neighbourhood Planning (Referendums) Regulations 2012.	Yes go to Q2
Question 2 Is the NP subject to preparation and/or adoption by a national, regional or local authority OR prepared by an authority for adoption through a legislative	Whilst the plan is not a requirement and is optional under the provisions of the Town and Country Planning Act as amended by the Localism Act (2011), it will, if "made" form part of the Development Plan of the LPAs. It is therefore important	Yes - go to Q3

procedure by Parliament or Government? (Art. 2(a))	and necessary to answer the following questions to determine whether the policies of the Plan are likely to have significant environmental effects and if further environmental assessments will be required under the EU Directive.	
Question 3 Is the NP prepared for agriculture, forestry, fisheries, energy, industry, transport, waste management, water management, telecommunications, tourism, town and country planning or land use, AND does it set a framework for future development consent of projects in Annexes I and II (see Appendix 2) to the EIA Directive? (Art 3.2(a))	Whilst the Guisborough Neighbourhood Plan covers a range of land use matters, it does not set the framework for future development consent of projects in Annexes I and II of the EIA Directive.	No - go to Q4
Question 4 Will the NP, in view of its likely effect on sites, require an assessment for future development under Article 6 or 7 of the Habitats Directive? (Art. 3.2 (b))	The North York Moors Special Area of Conservation (SAC) and North York Moors Special Protection (SPA) are partially located within the Neighbourhood Plan boundaries. The Teesmouth and Cleveland Coast SPA/Ramsar site is also nearby. A separate HRA screening opinion has been undertaken.	Yes
Question 5 Does the NP determine the use of small areas at local level, OR is it a minor modification of a PP subject to Art. 3.2? (Art. 3.3)		No
Question 6 Does the NP set the framework for future development consent of projects (not just projects in annexes to the EIA Directive)? (Art 3.4)	Yes, once made the Guisborough Neighbourhood Plan will form part of the Development Plan for the area and will be used to determine planning applications.	Yes
Question 7 Is the NP's sole purpose to serve the national defence or civil emergency, OR is it a financial or budget PP, OR is it co-financed by structural		No

funds or EAFF programmes 2000 to 2006/7? (Art 3.8, 3.9)		
Question 8 Is it likely to have a significant effect on the environment? (Art. 3.5)	<p>The Guisborough Neighbourhood Plan does not propose to allocate specific sites for future development or change the way in which sites are used.</p> <p>The Neighbourhood plan supports sustainable development and includes policies which aim to shape the design of development and protect the natural environment</p> <p>The content and broad approach of the Plan has been prepared in general conformity with the Redcar and Cleveland Local Plan and the North York Moors Local Plan which have already had regard to European Directives and National Regulations on Environmental Impact.</p> <p>Overall, the Plan is therefore not considered to have a significant effect on the environment, or on designated sites. Therefore, SEA is not required.</p>	SEA not required

Part 2: Effect on the Environment

- 4.2 Table 2 sets out the assessment undertaken to determine whether the Neighbourhood Plan is likely to have any significant effects on the environment, using criteria set out in Annex II of the SEA Directive and Schedule 1 of the UK Environmental Assessment of Plans and Programmes Regulations 2004.

Table 3: Effects on the Environment

Criteria (from Annex II of SEA Directive and Schedule I of Regulations)	Assessment	Likely Significant Environmental Effect?
The degree to which the plan or programme sets a framework for projects and other activities, either with regard to the location, nature, size, and operating conditions or by allocating resources	<p>Once made, the Neighbourhood Plan will form the framework for decision making for development proposals in the area.</p> <p>The policies include locally specific criteria and do not propose any new allocations. While the Plan proposes a number of open space designations and</p>	No

	<p>Local Greenspace designation these would not result in alternative uses of land.</p> <p>The Neighbourhood Plan is in general conformity with the adopted Redcar & Cleveland Local Plan and the North York Moors Local Plan and as such the SA/SEA carried out for these plans are considered sufficient.</p>	
The degree to which the plan or programme influences other plans or programmes including those in a hierarchy	<p>The influence of the Neighbourhood Plan on other plans or programmes is limited. No plans or programmes will sit below the Neighbourhood Plan in the hierarchy.</p> <p>The Neighbourhood Plan will sit below the adopted Local Plans and Minerals and Waste Plans and has been prepared in general accordance with these adopted documents which have been subject to their own SEA.</p>	No
The relevance of the plan or programme for the integration of environmental considerations, in particular with a view to promoting sustainable development.	The Neighbourhood plan supports sustainable development and includes policies which aim to shape the design of development and protect the natural environment within a local area.	No
Environmental problems relevant to the plan	<p>The Neighbourhood Plan does not allocate any land for development and has been prepared in accordance with the adopted Development Plans for Redcar & Cleveland and the North York Moors National Park, which have been prepared in accordance with SEA Regulations to address relevant environmental problems.</p> <p>Any environmental problems relevant to the plan are localised and are therefore not considered significant in the context of the SEA.</p>	No
The relevance of the plan or programme for the implementation of Community legislation on the environment (e.g. plans and programmes linked to	The Neighbourhood Plan has no specific policies on implementing Community legislation. The Neighbourhood Plan is in general conformity with the Development Plan for Redcar and Cleveland and the North York Moors National Park and national planning	No

waste management or water protection).	policy. The Local Plans and Mineral and Waste Plans have had regard to National and European legislation on the environment.	
The probability, duration, frequency and reversibility of the effects	<p>An element of environmental change is likely to occur, as the Plan does not seek to prevent change, however the plan does not propose any allocations. Change will depend on individual proposals and will be assessed at the development management stage.</p> <p>The Neighbourhood Plan seeks to promote sustainable development that will conserve and enhance the environment.</p>	No
The cumulative nature of the effects	<p>An element of environmental change is likely to occur, as the Plan does not seek to prevent change, however the Plan does not propose any allocations. The impact of this change will depend upon individual proposals and will be assessed at the development management stage.</p> <p>The Neighbourhood Plan seeks to promote sustainable development that will conserve and enhance the environment.</p>	No
The transboundary nature of the effects	Effects will be localised with limited impact on neighbouring areas, therefore little transboundary effects are expected	No
The risks to human health or the environment (e.g. due to accidents)	There are no known issues or identified risk to human health or the environment as a result of the Neighbourhood Plan.	No
The magnitude and spatial extent of the effects (geographical area and size of the population likely to be affected)	The Neighbourhood Plan covers the Guisborough Parish area only and contains no allocations. The magnitude and extent of effects are therefore expected to be limited.	No

<p>The value and vulnerability of the area likely to be affected due to:</p> <ul style="list-style-type: none"> • Special natural characteristics or cultural heritage • Exceeded environmental quality standards or limit values • Intensive Land-use • The effects on areas or landscapes which have a recognised National, Community or International protection status. 	<p>The Guisborough Neighbourhood Plan includes some areas that are environmentally or culturally sensitive including the North York Moors SAC and SPA, Guisborough and Upleatham Conservation Areas, Listed buildings and other heritage assets and local designations.</p> <p>The impact of the Neighbourhood Plan on protected European sites has been assessed separately through the Habitats Regulations Screening.</p> <p>The Neighbourhood Plan has been prepared in accordance with the adopted Development Plans for Redcar & Cleveland and the North York Moors National Park , which have been prepared in accordance with SEA Regulations. The Neighbourhood Plan seeks to promote sustainable development that will conserve and enhance the environment.</p> <p>No adverse effects on these designated sites from the Neighbourhood Plan have been identified.</p>	<p>No</p>
<p>The effects on areas or landscapes which have been recognised, national, community or international protection status.</p>	<p>Part of the Plan area is within the North York Moors National Park, this is recognised in the Plan and the policies within it.</p> <p>The Neighbourhood Plan has been prepared in accordance with the adopted Development Plans for Redcar & Cleveland and the North York Moors National Park , which have been prepared in accordance with SEA Regulations.</p>	<p>No</p>

5. Conclusion

5.1 The results of the above assessment conclude that the Guisborough Neighbourhood Plan is unlikely to result in significant environmental effects. The Plan covers a relatively small area and does not allocate sites for development. Redcar & Cleveland Borough Council, in consultation with the North York Moors National Park Authority, therefore conclude that it will not be necessary to carry out an SEA on the draft Guisborough Neighbourhood Plan.