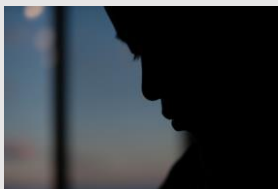




Mental Health Act Assessment Referral

If you are making a referral for a formal Mental Health Act Assessment, including Community Assessments, Inpatient/Community Treatment Orders, or if you wish to discuss making a referral please contact us on:

01642 771 600



Your call will be answered by an administrator who will take basic details. This information will be passed to the duty Mental Health Assessment Manager, who will contact you to discuss the referral, and if appropriate to pass to the duty Approved Mental Health Professional.

Large Print Version 4 – December 2023