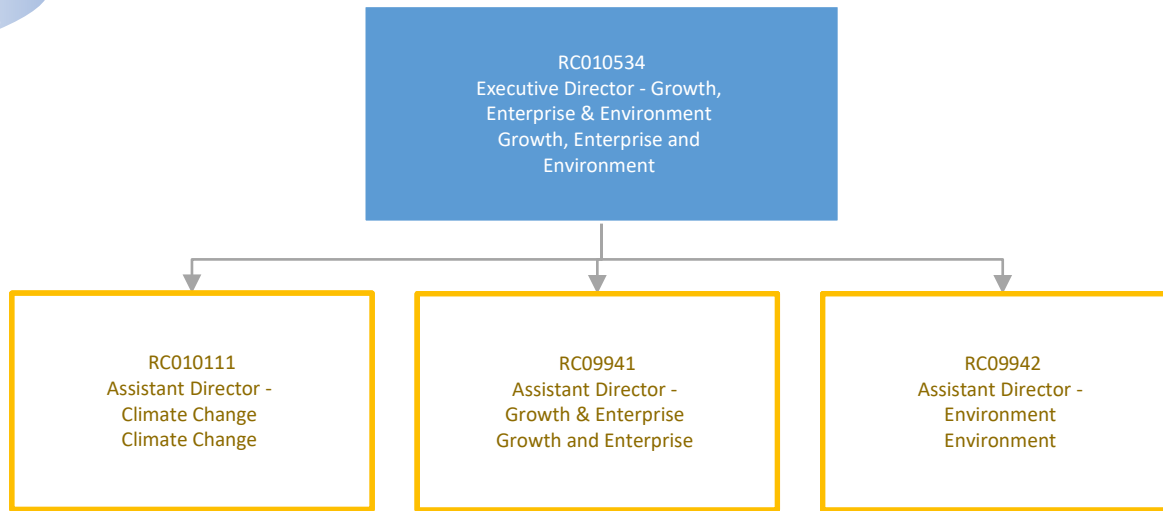
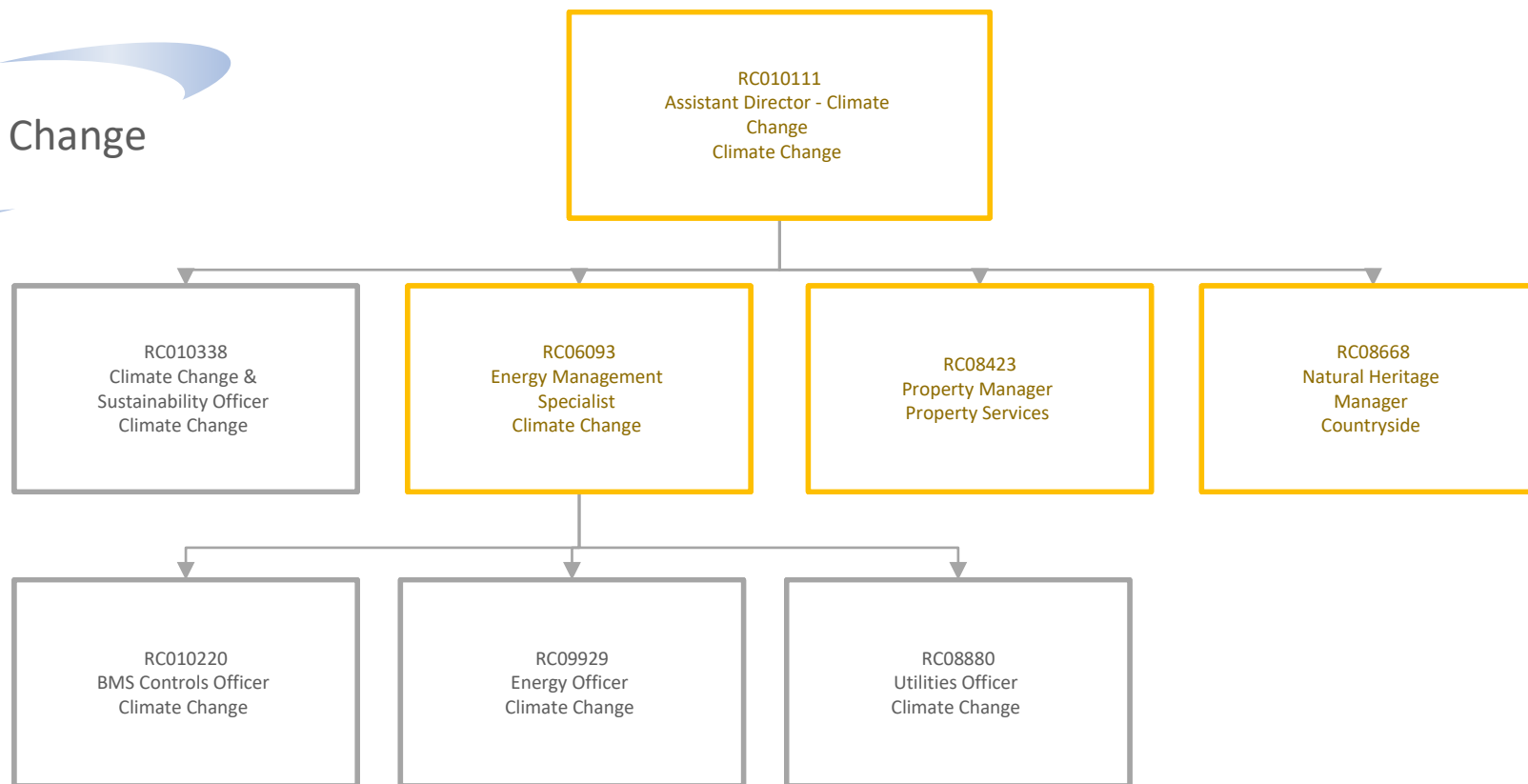
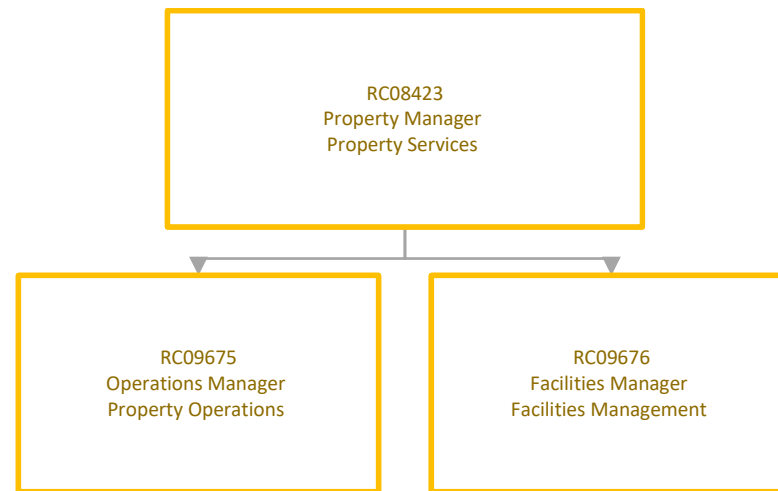
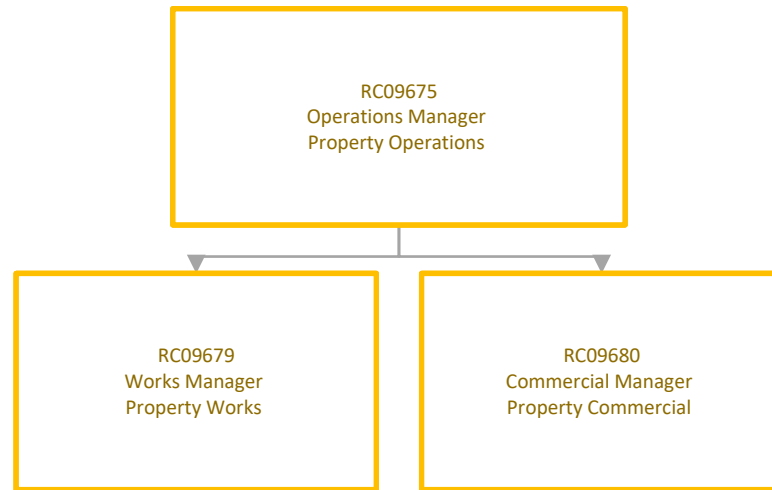


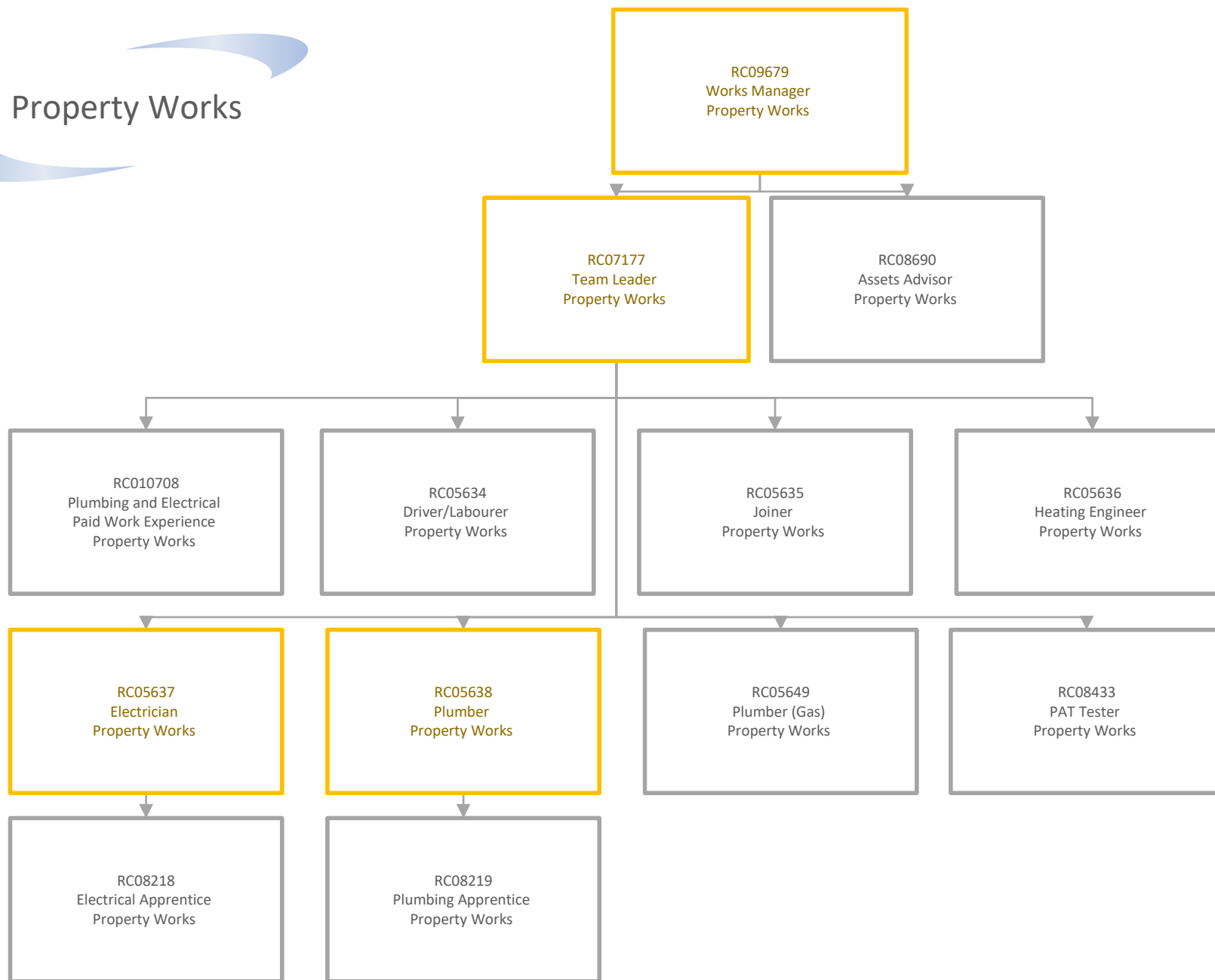
Growth, Enterprise and Environment

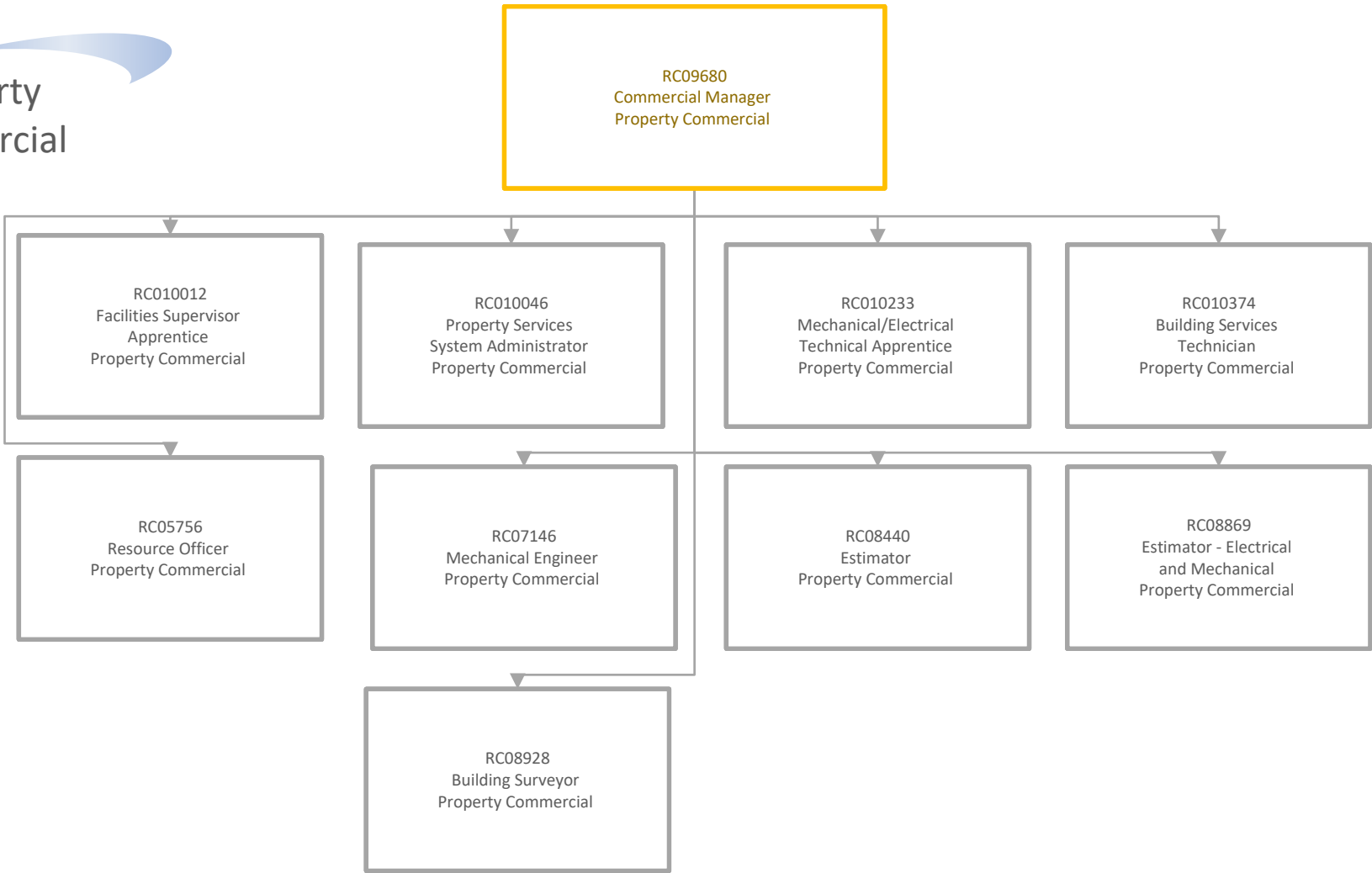


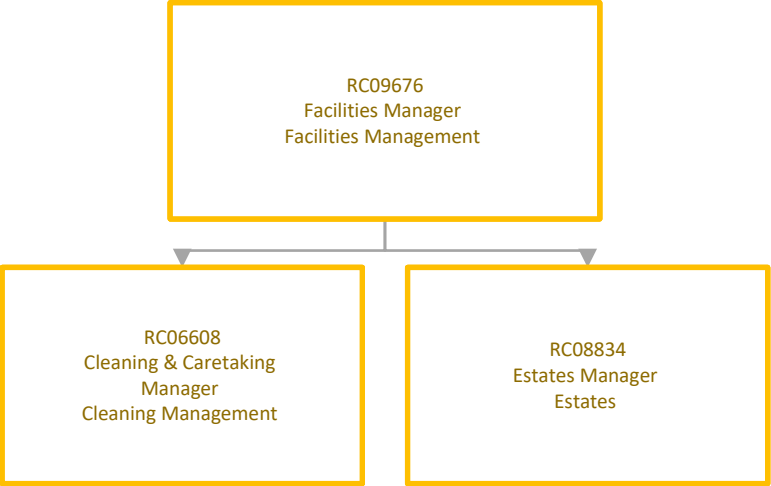


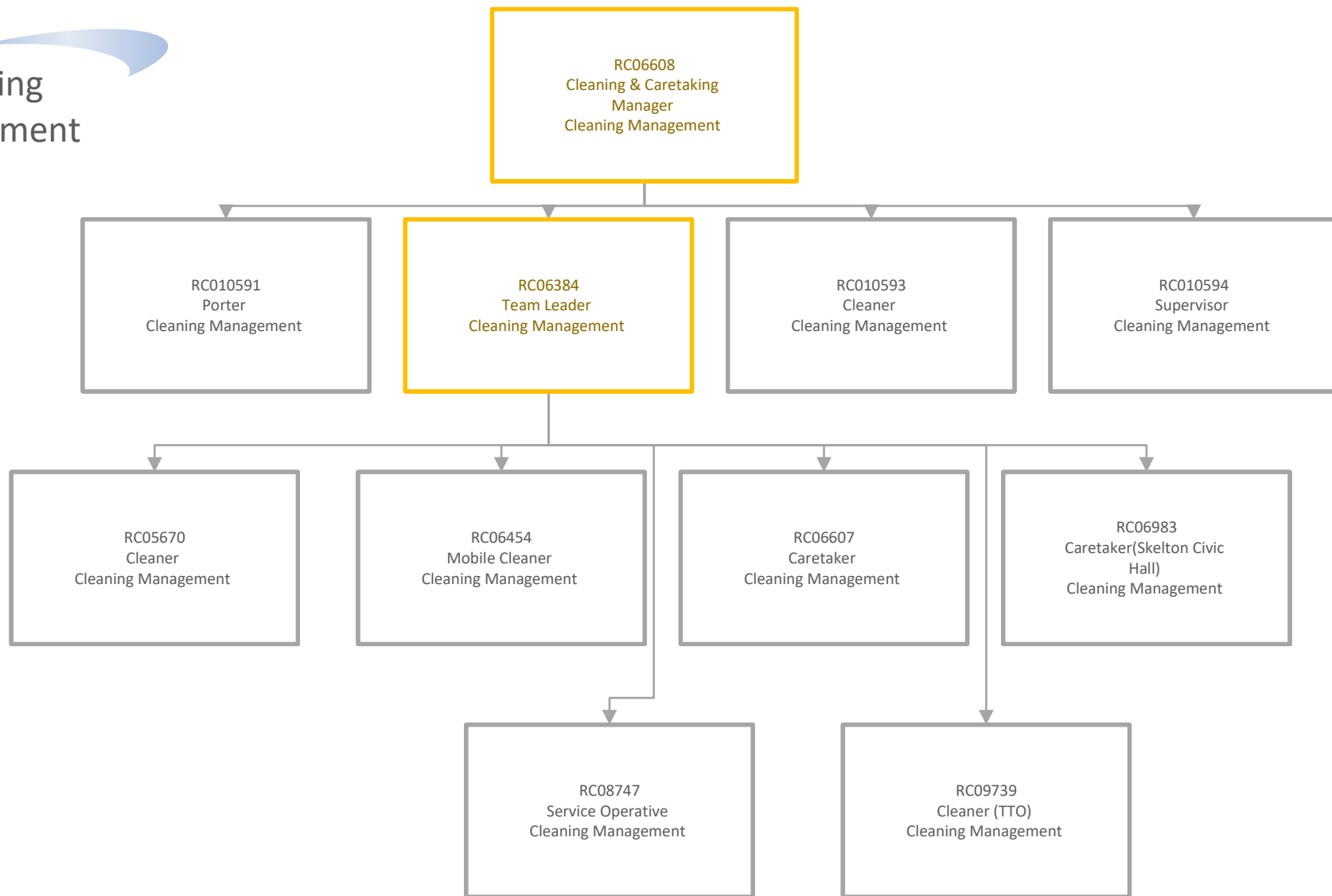


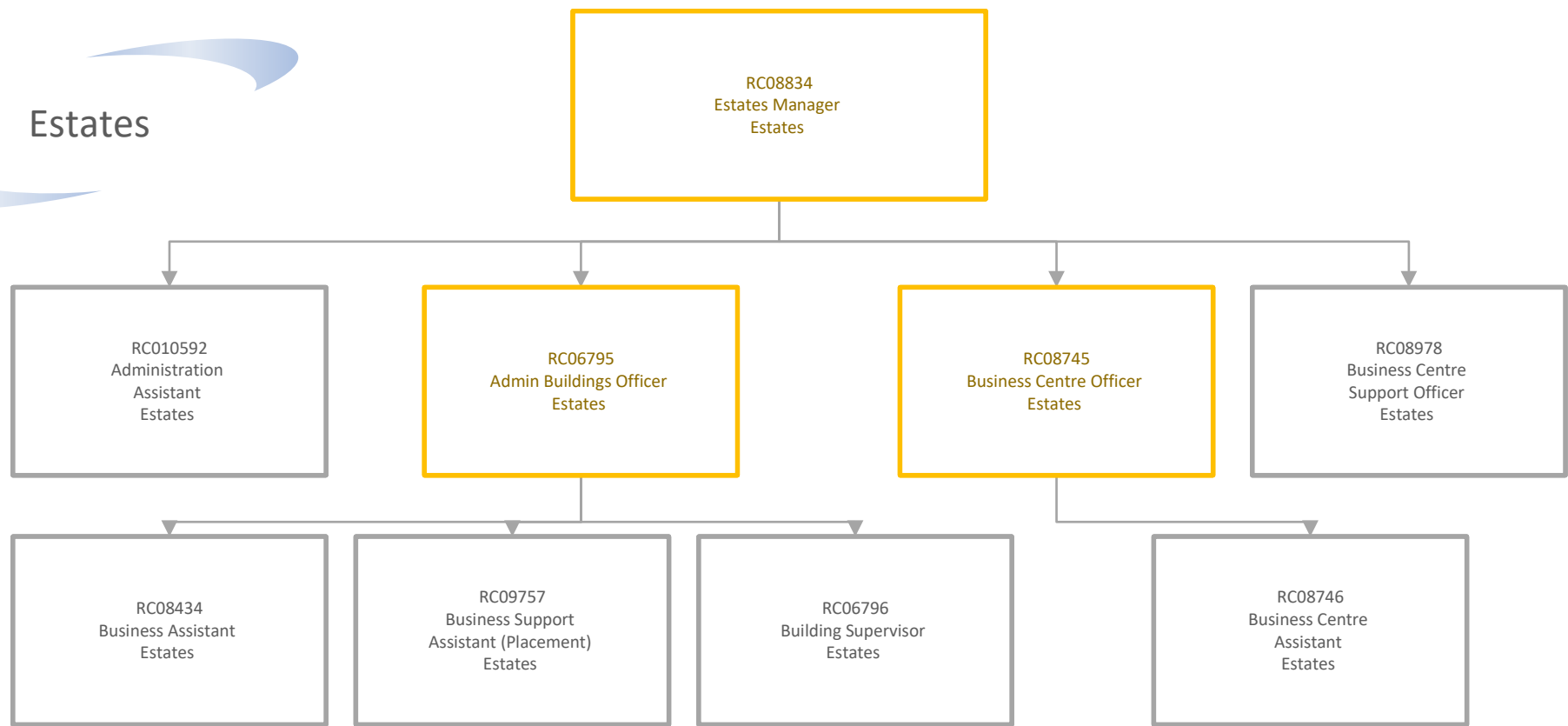


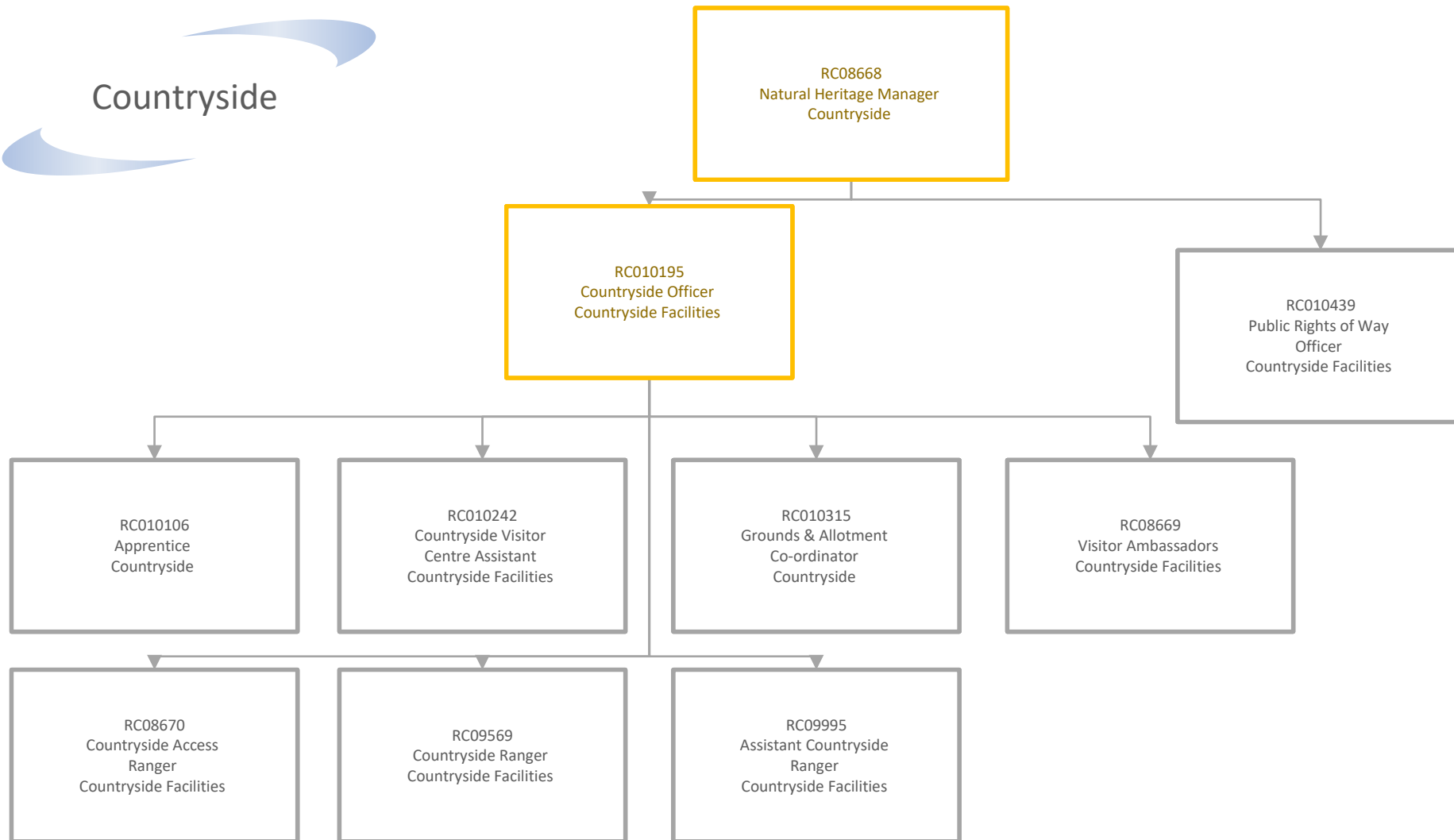














Growth and Enterprise

RC09941
Assistant Director - Growth
& Enterprise
Growth and Enterprise

RC010107
Business Engagement
Manager
Business Growth

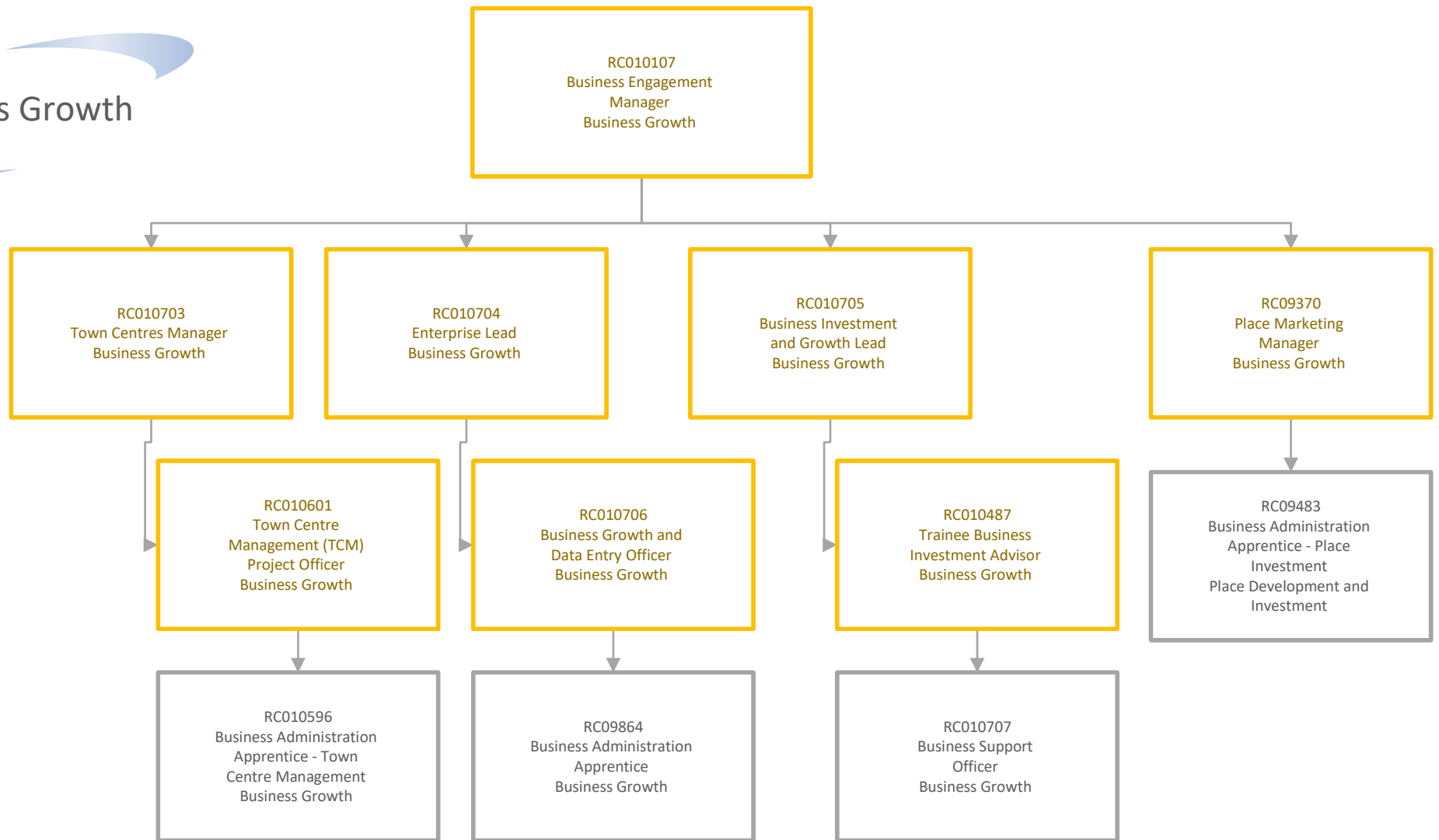
RC010344
Learning, Skills and
Employment Manager
Learning, Skills and
Employment

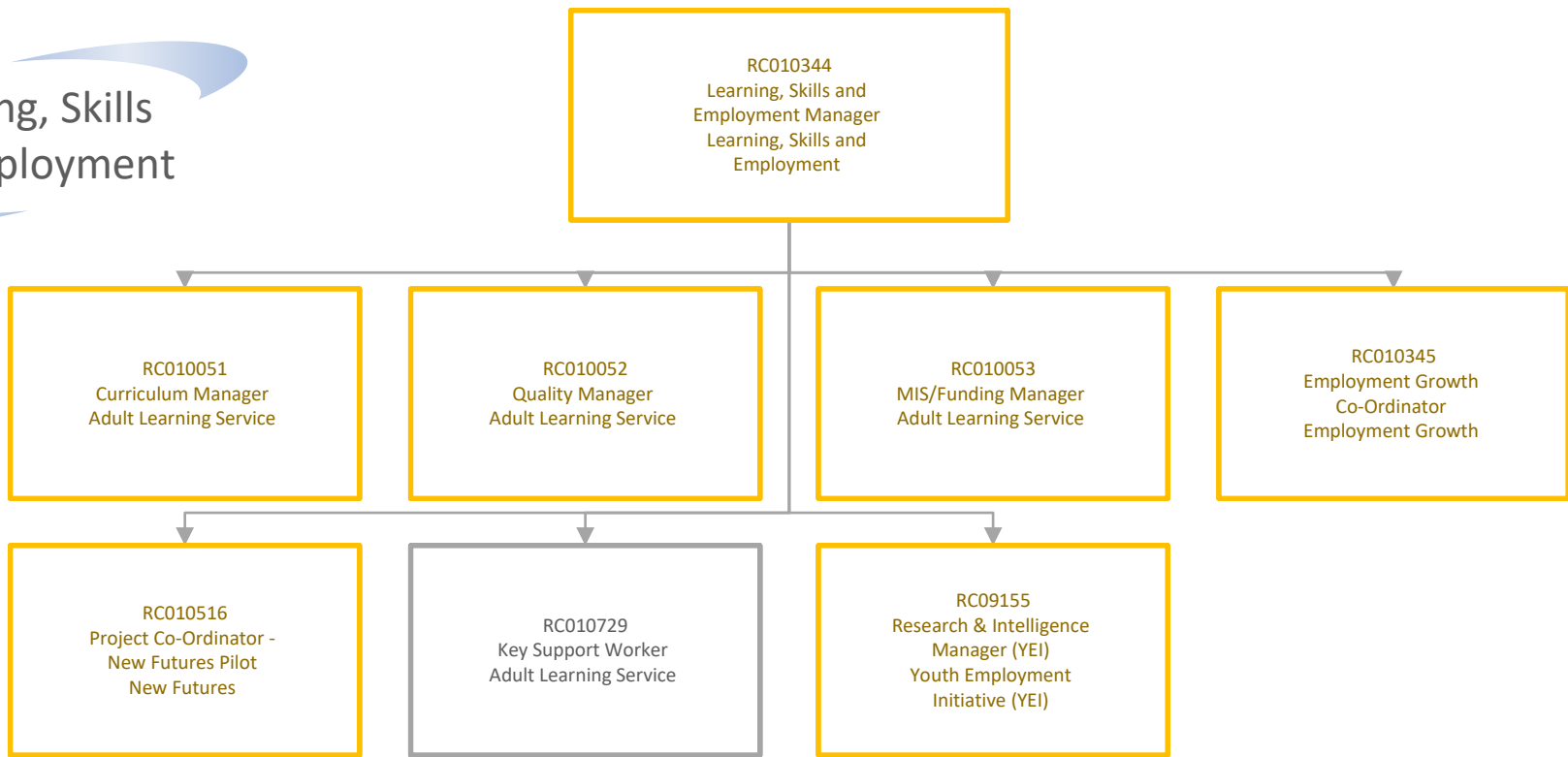
RC08393
Strategic Asset
Manager
Assets Strategy and
Information

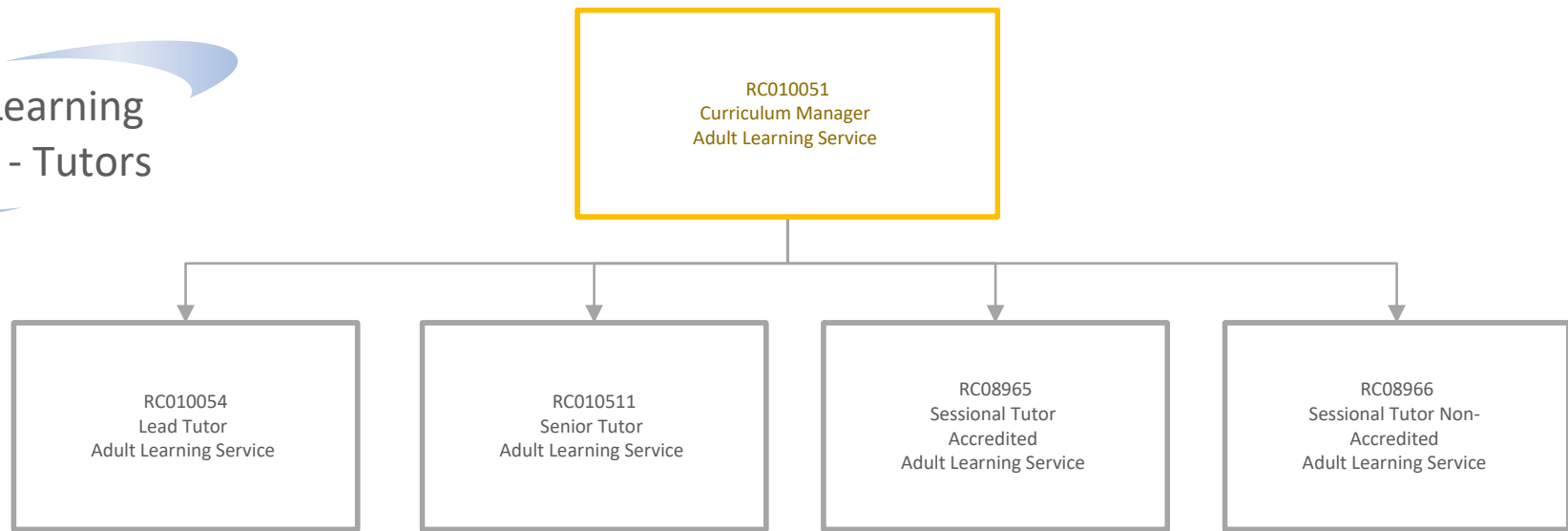
RC09181
Head of Planning &
Development
Planning and
Development

RC09497
Head of Place
Development &
Investment
Place Development and
Investment

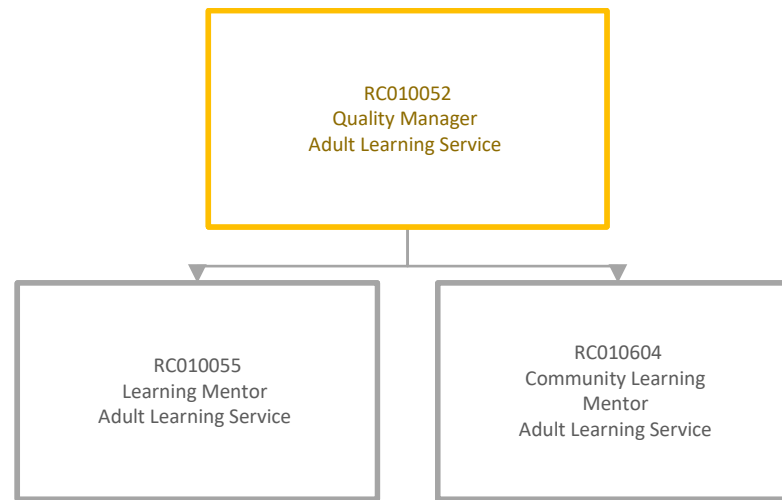
Business Growth



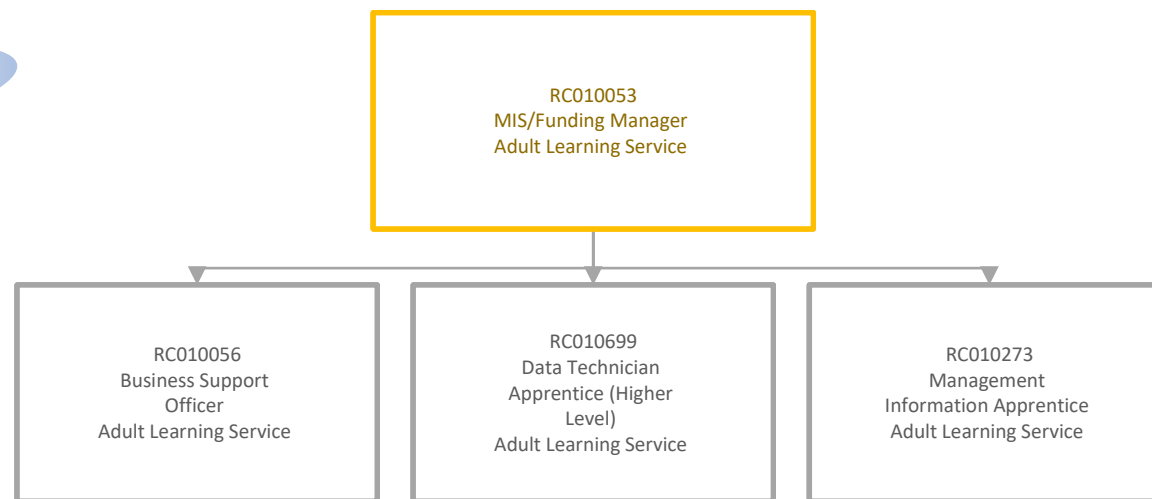


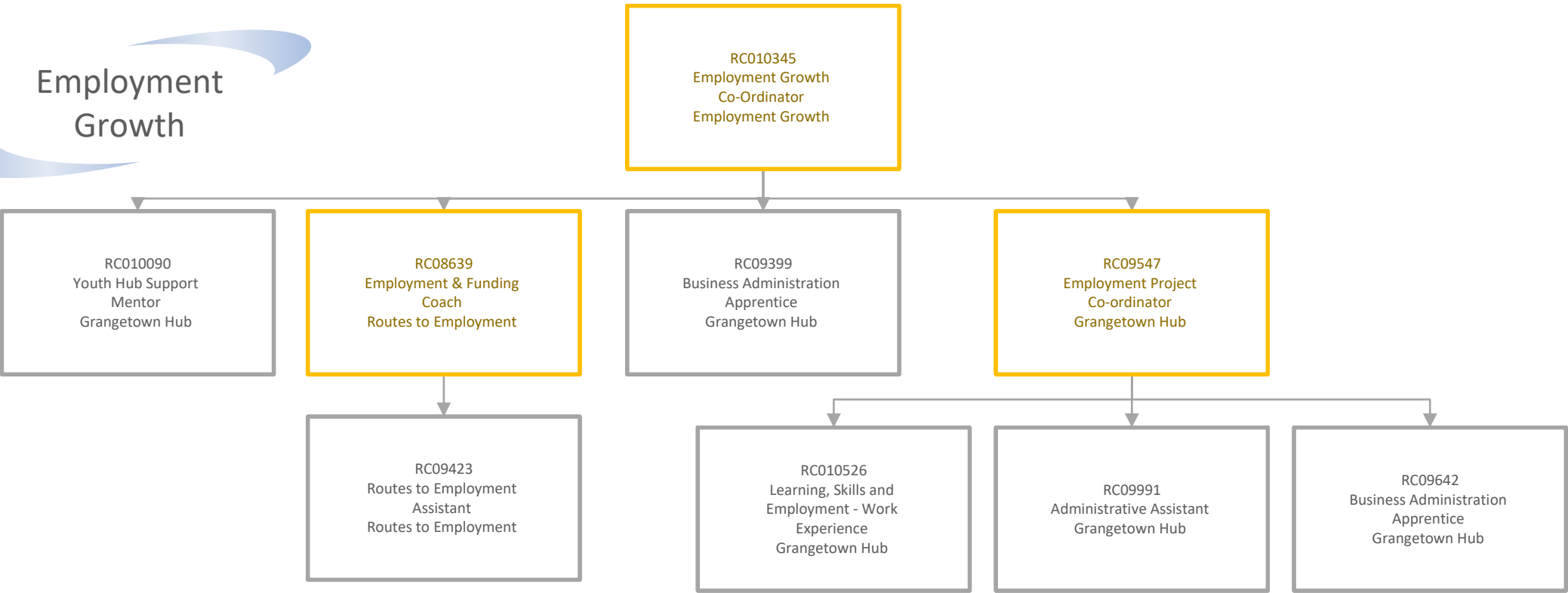


Adult Learning
Service -
Learning
Mentors



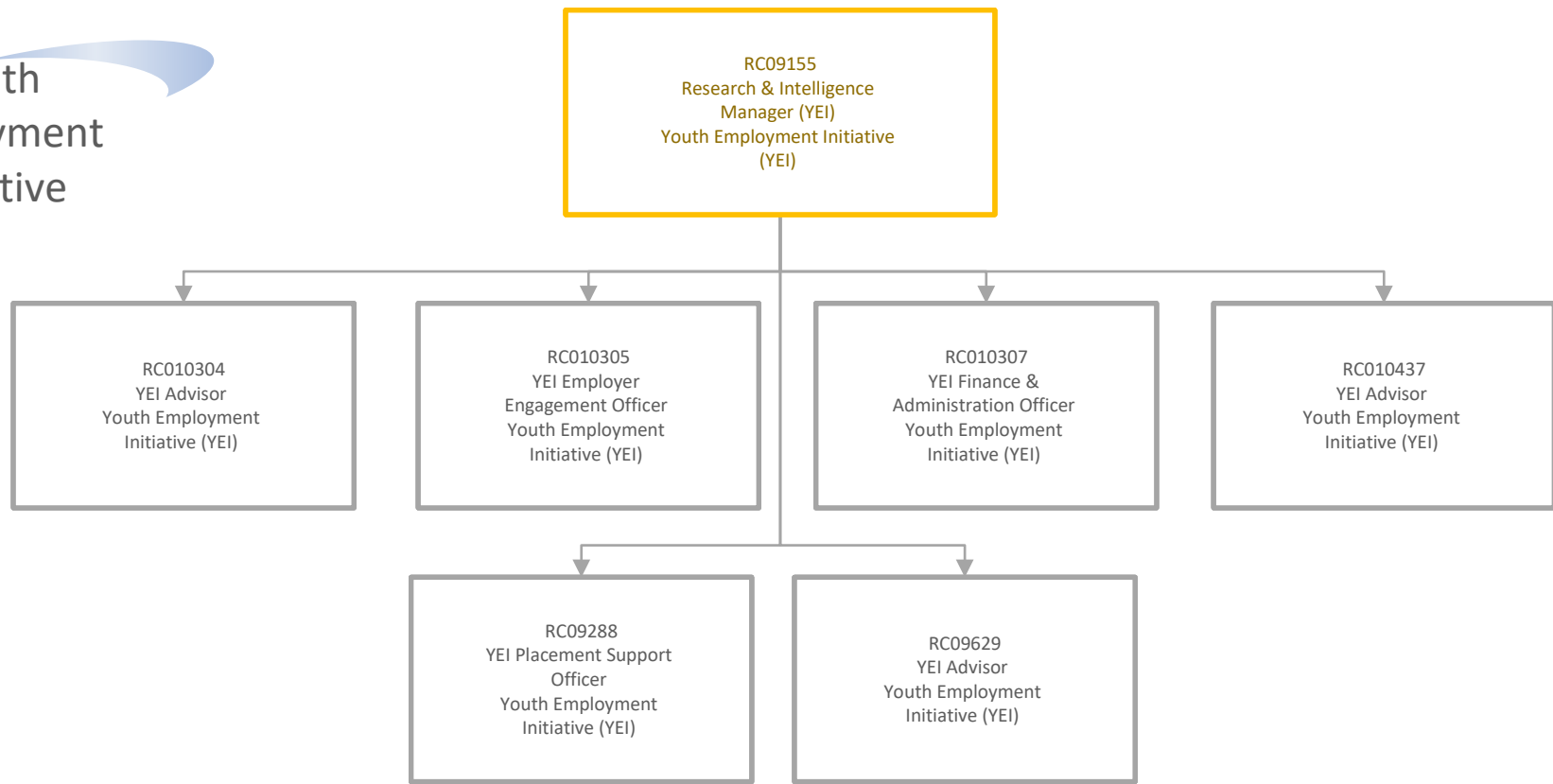
Adult Learning
Service -
Management
Information

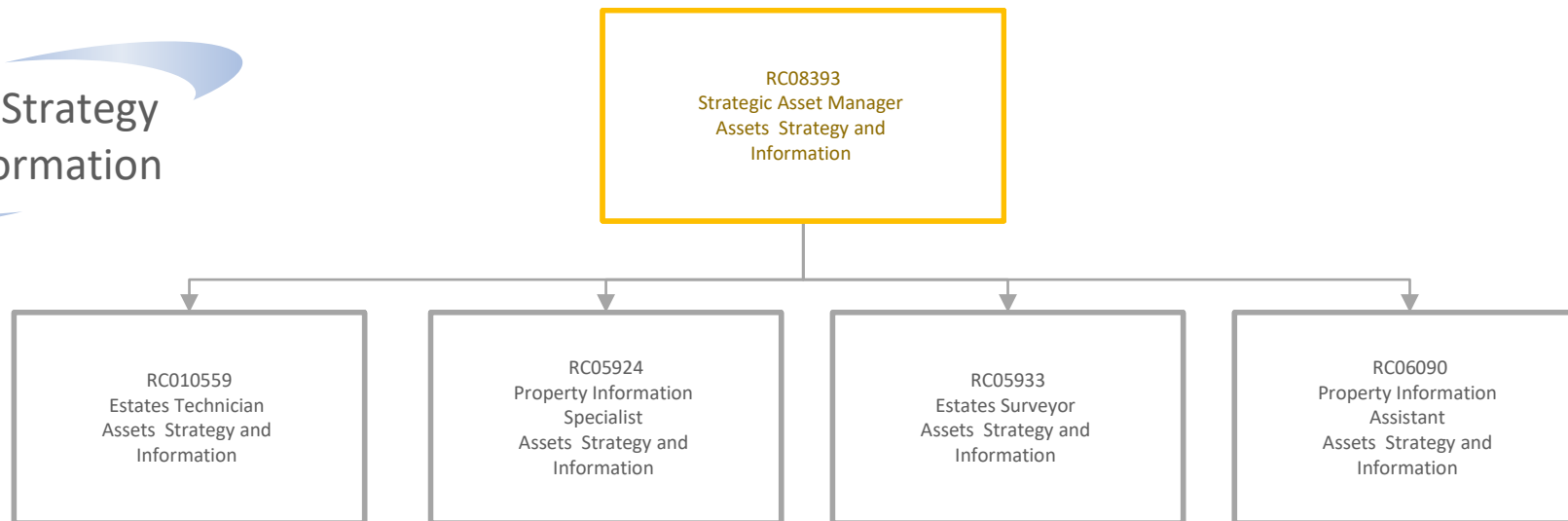
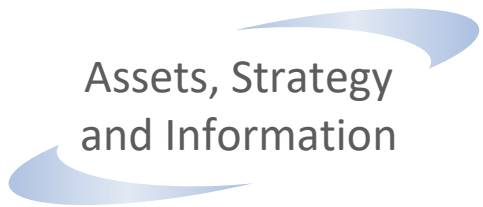






Youth Employment Initiative





Planning and Development

RC09181
Head of Planning &
Development
Planning and Development

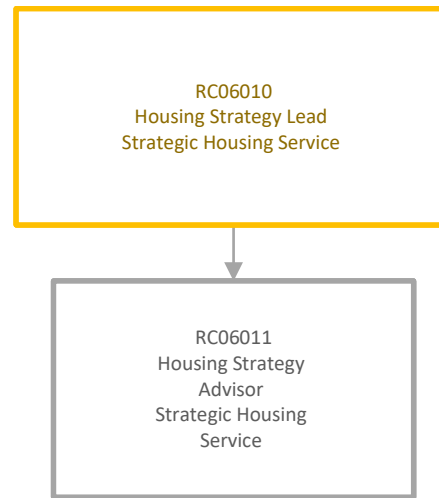
RC06010
Housing Strategy Lead
Strategic Housing
Service

RC06043
Building Control
Manager
Building Control Service

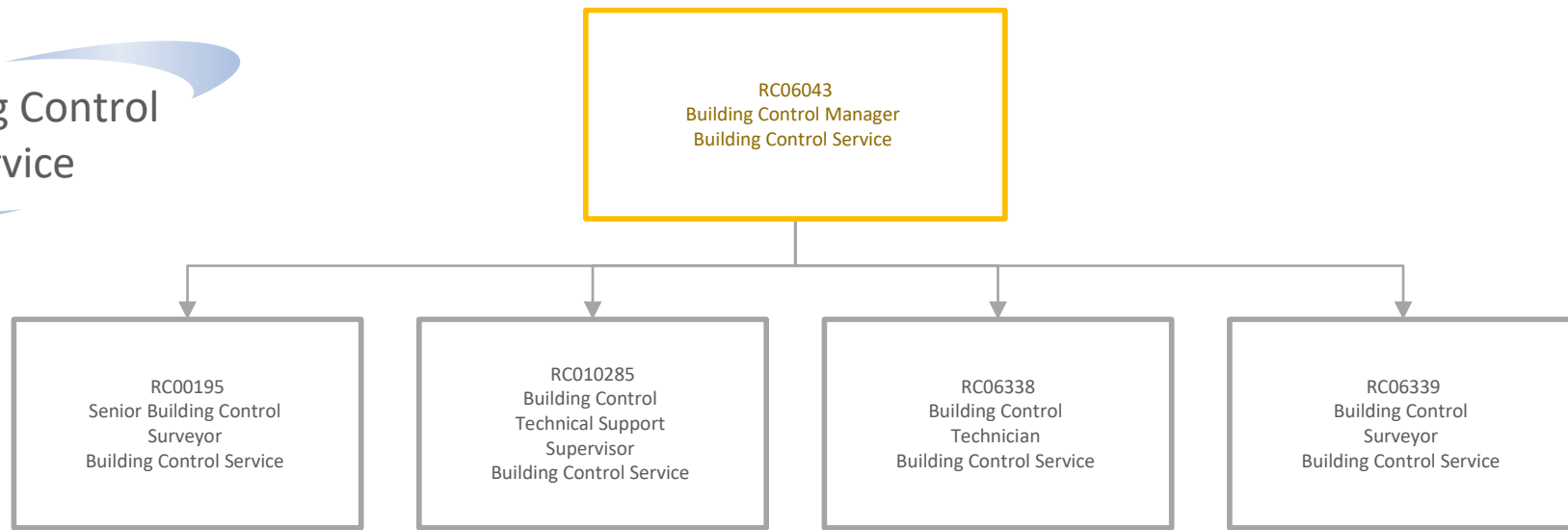
RC07921
Planning Strategy
Manager
Strategic Planning
Service

RC08012
Licensing Manager
Licensing

RC09182
Development Services
Manager
Development
Management Service

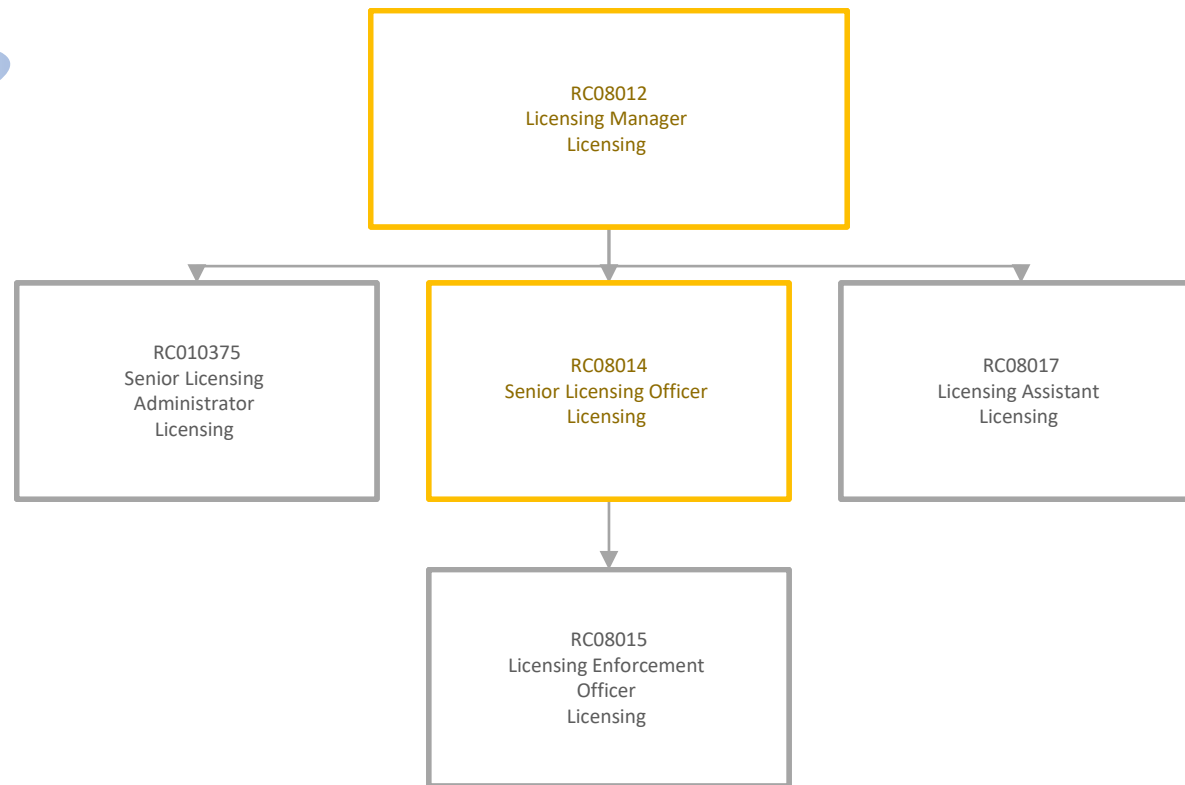


Building Control Service

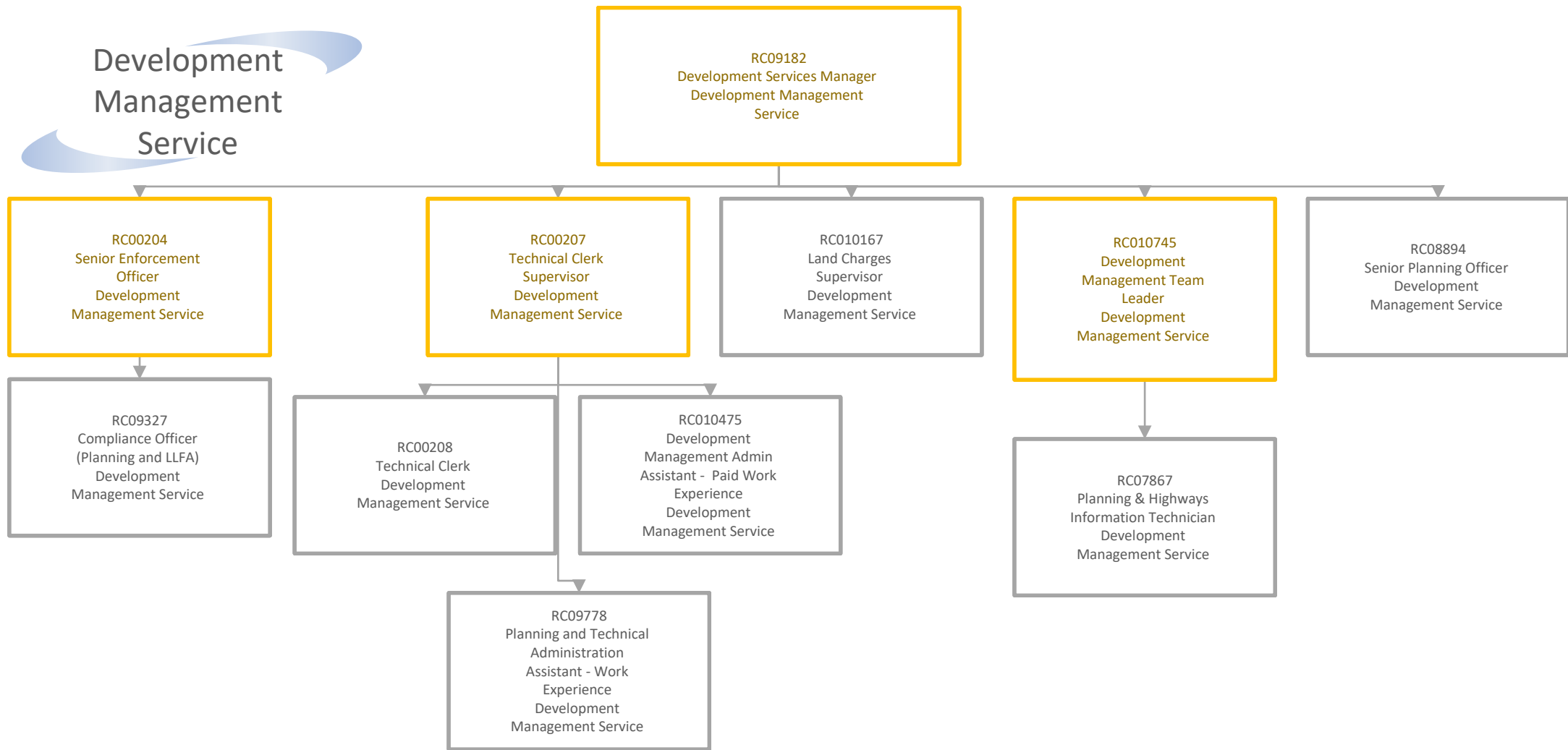




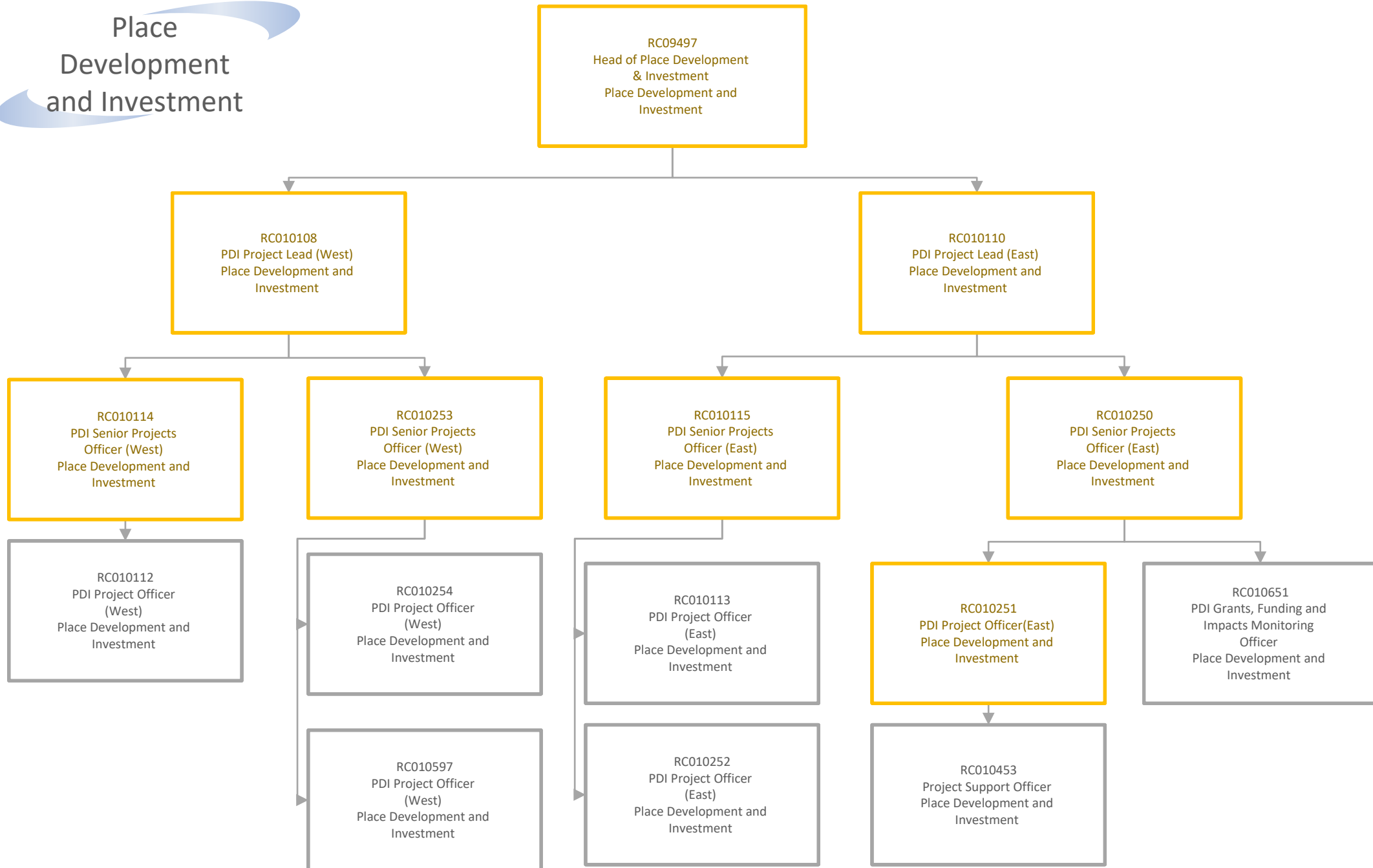
Licensing



Development Management Service

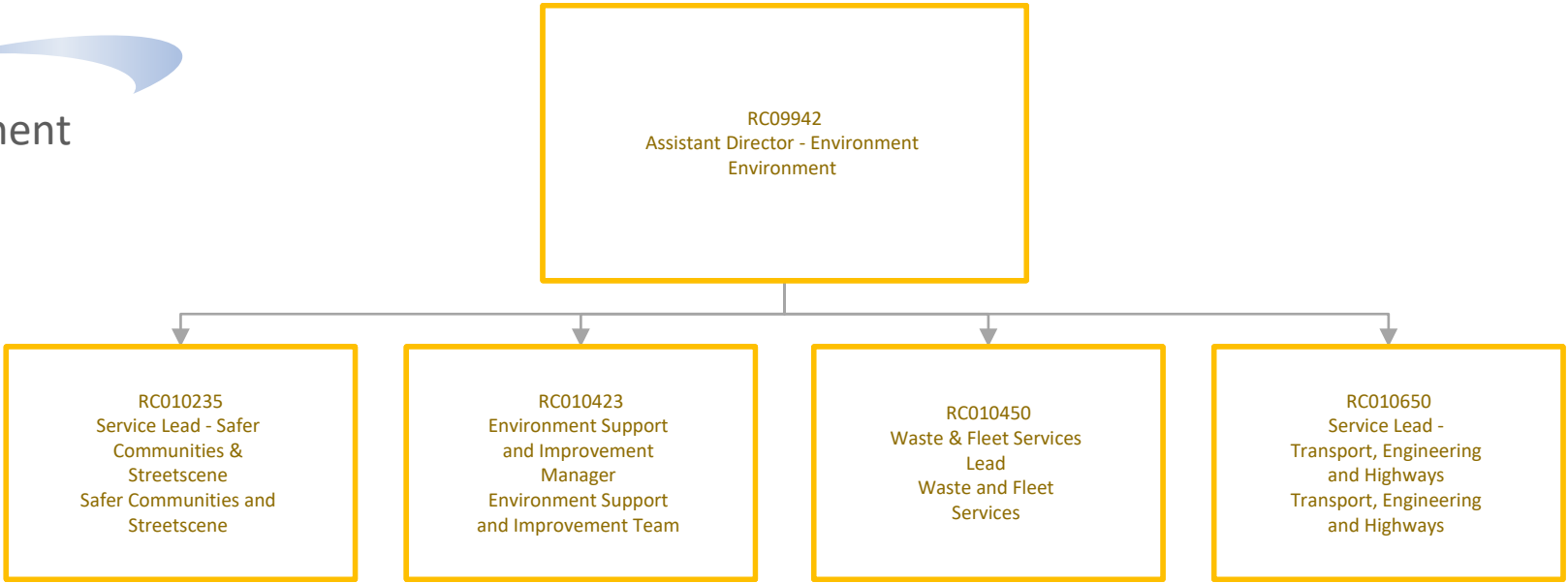


Place Development and Investment

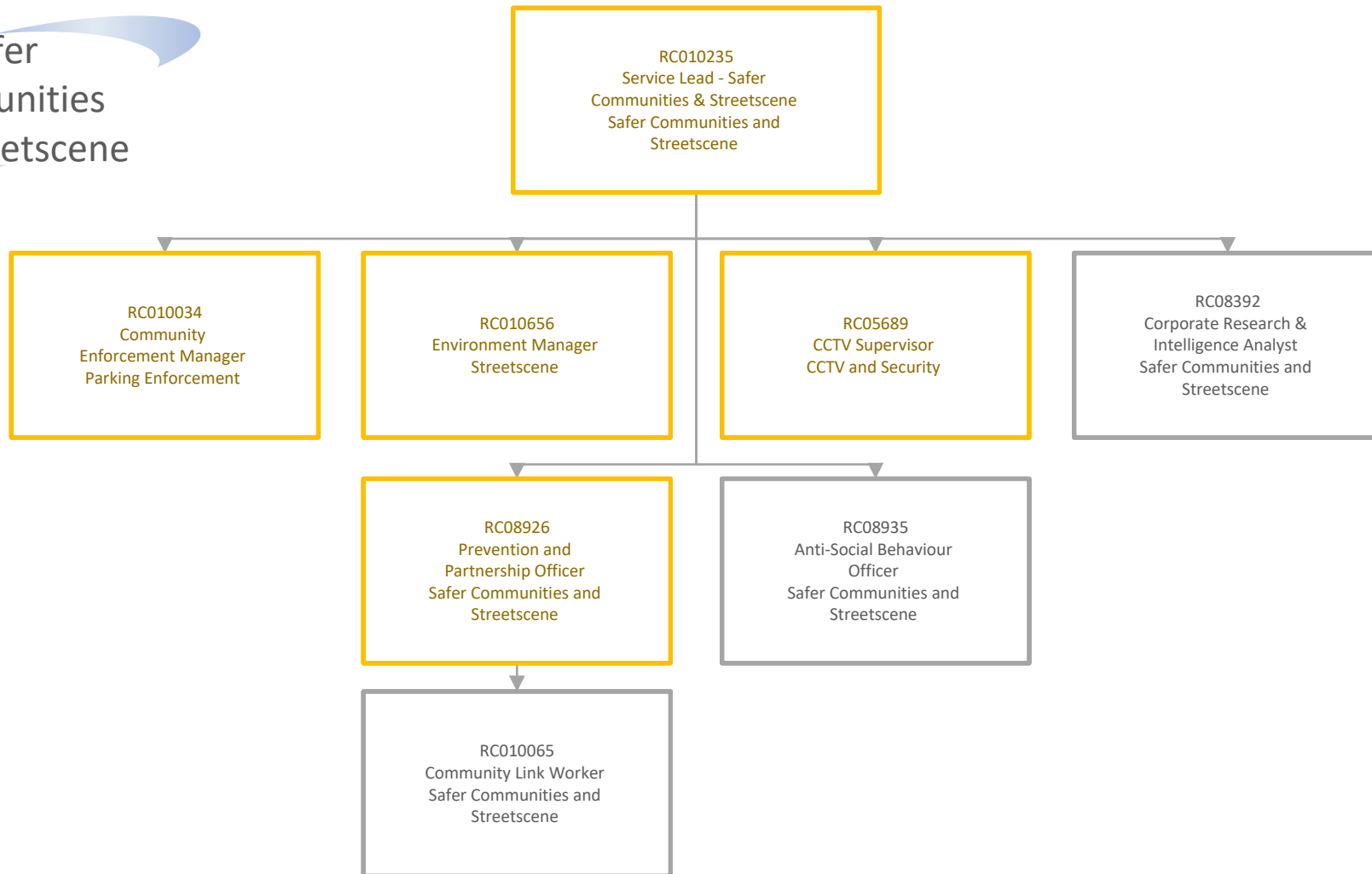


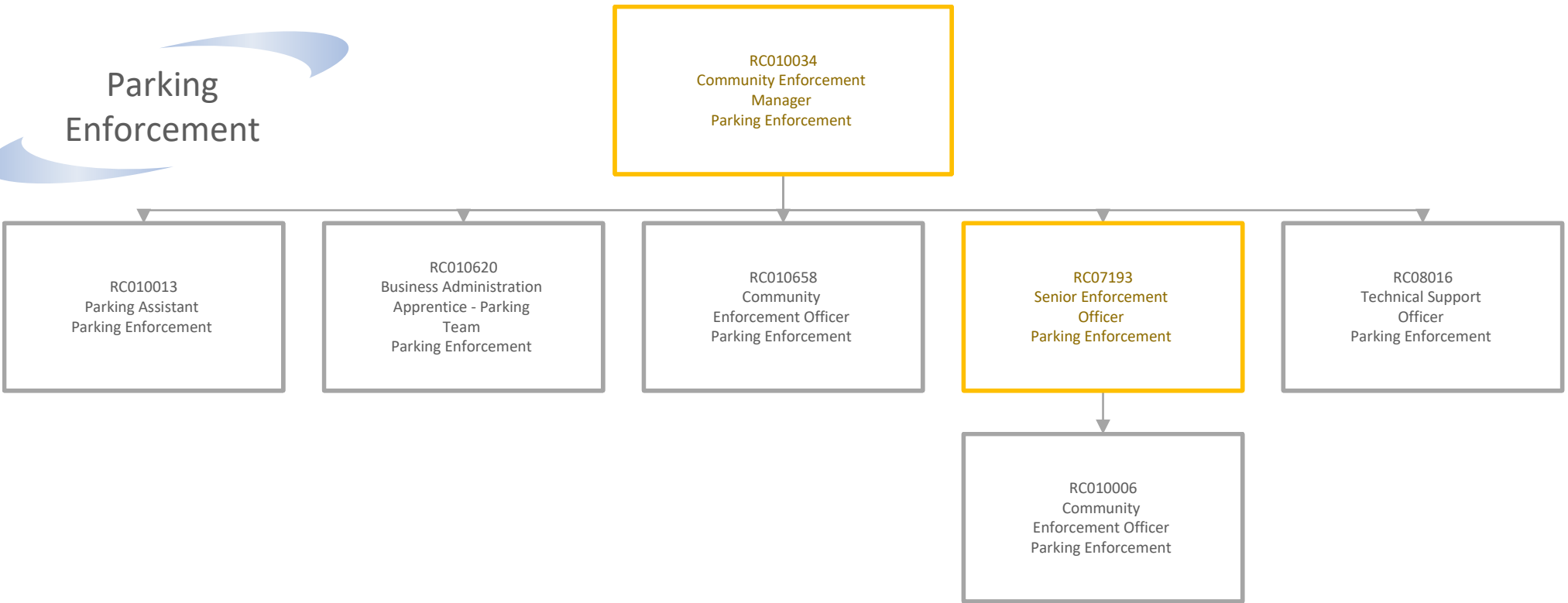


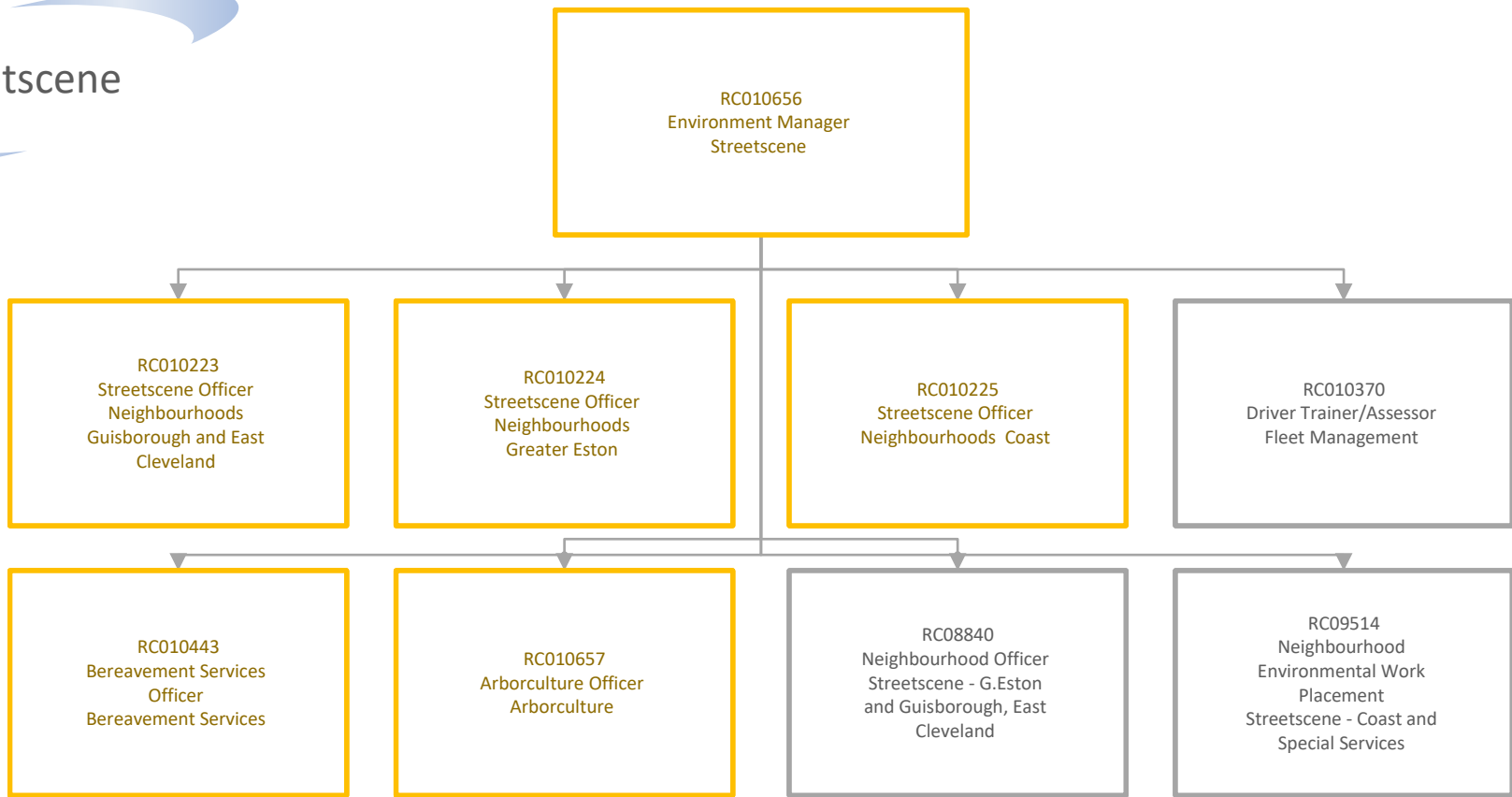
Environment



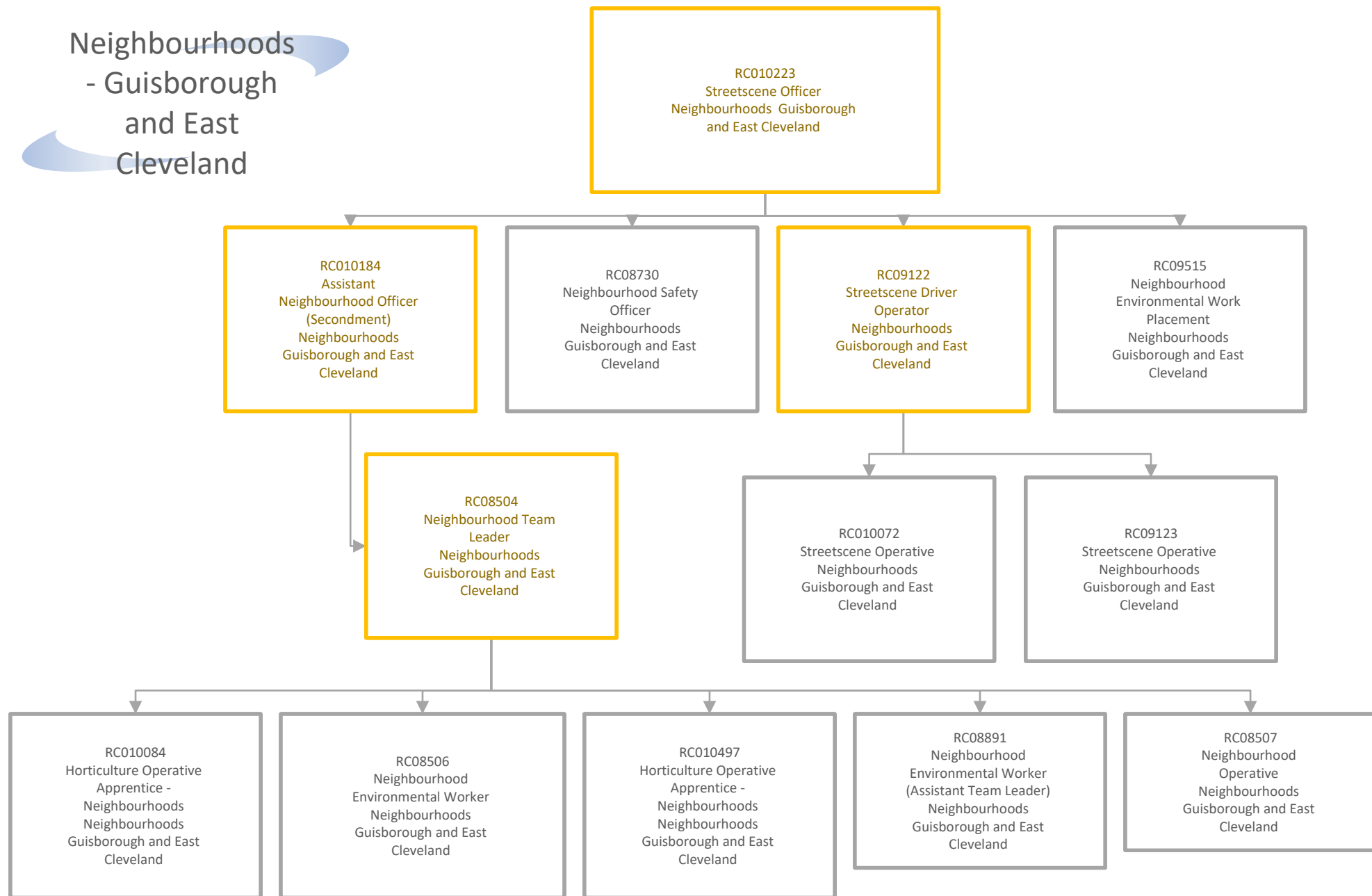
Safer Communities and Streetscene



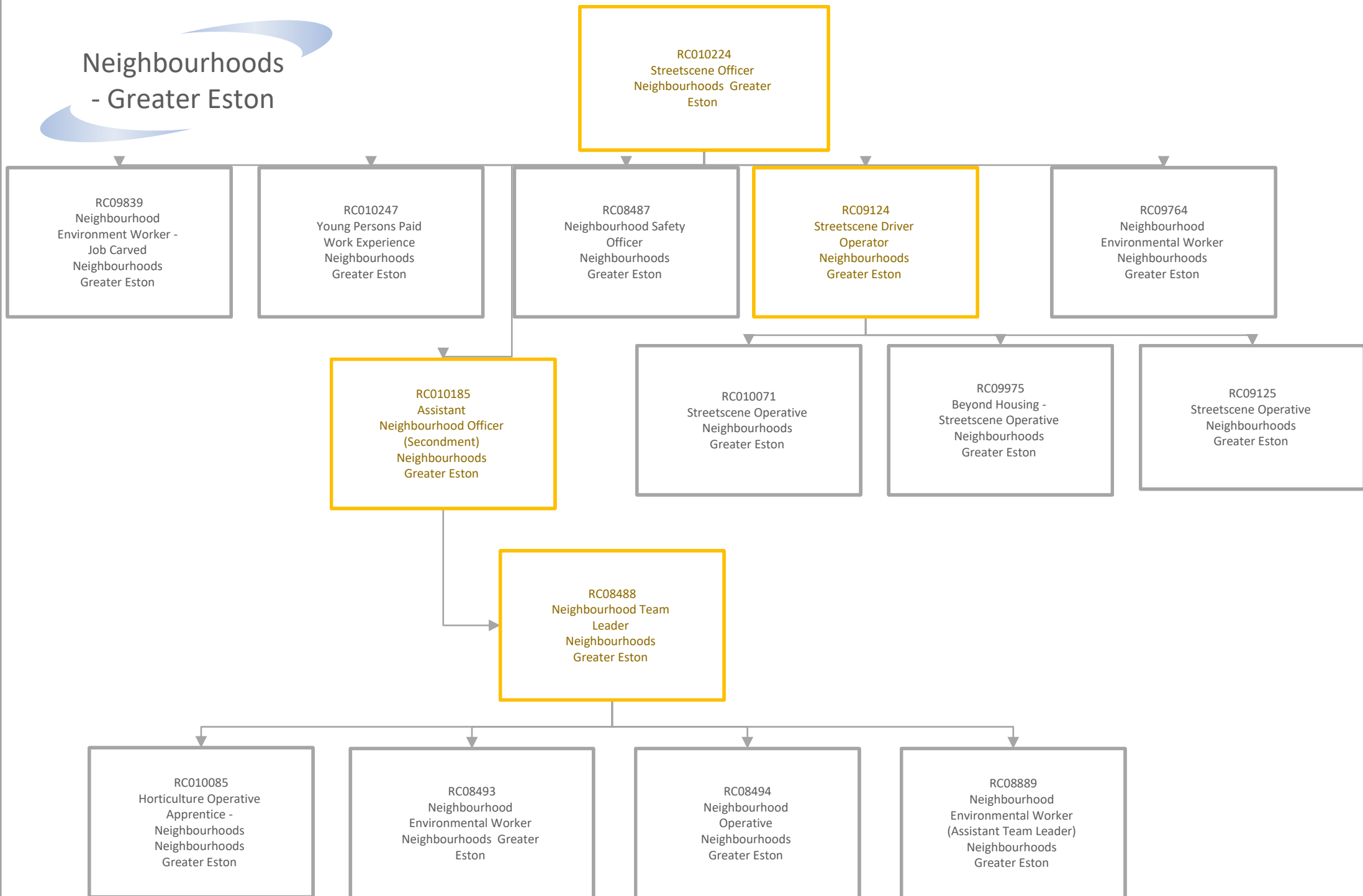




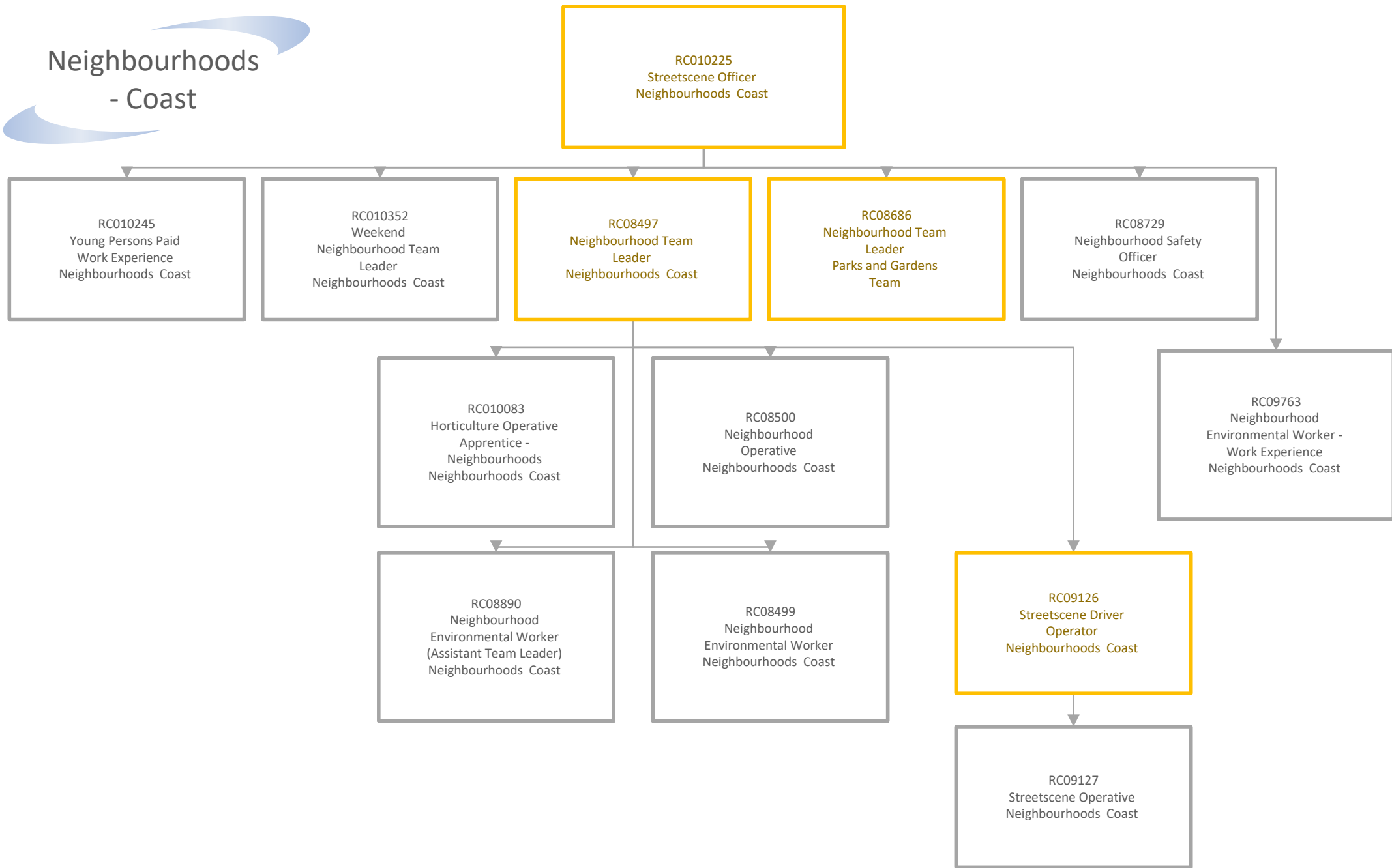
Neighbourhoods - Guisborough and East Cleveland

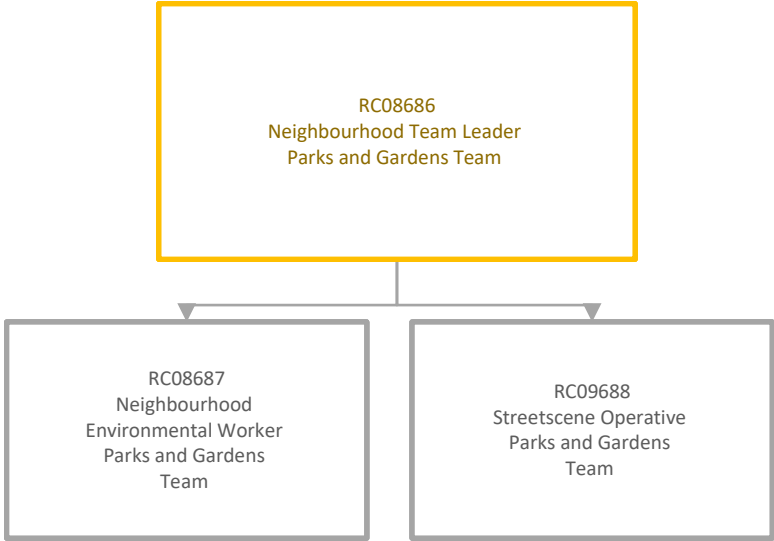


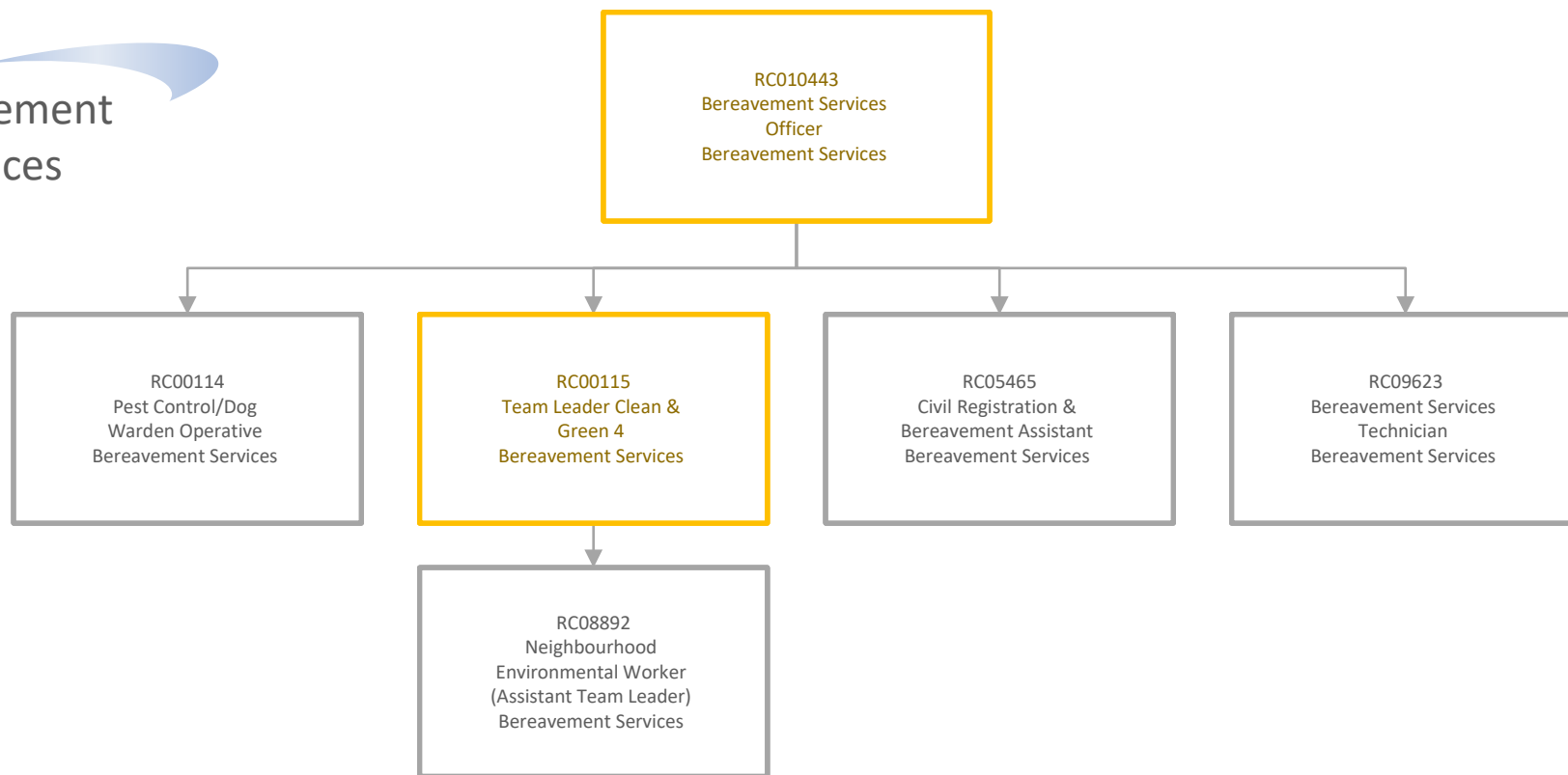
Neighbourhoods - Greater Eston

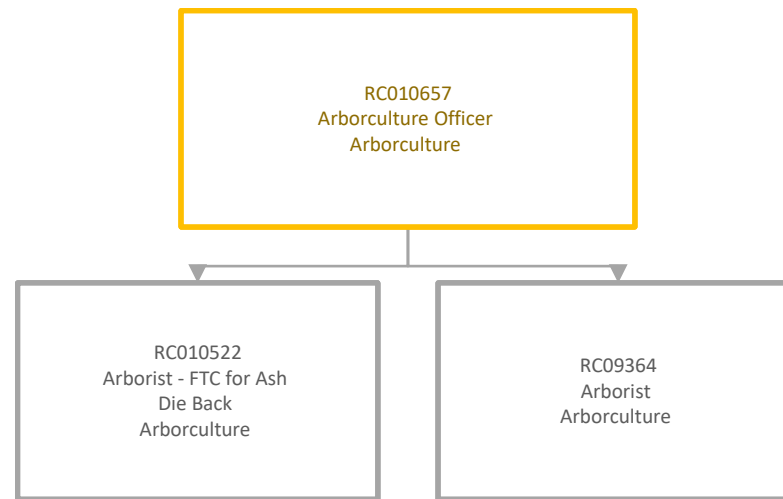


Neighbourhoods - Coast

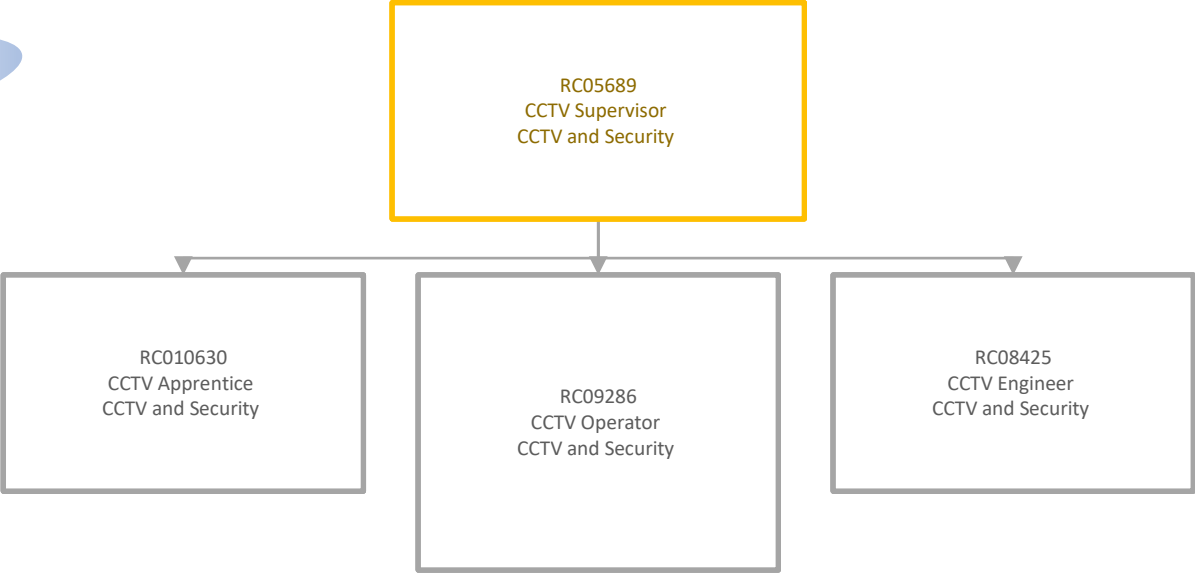




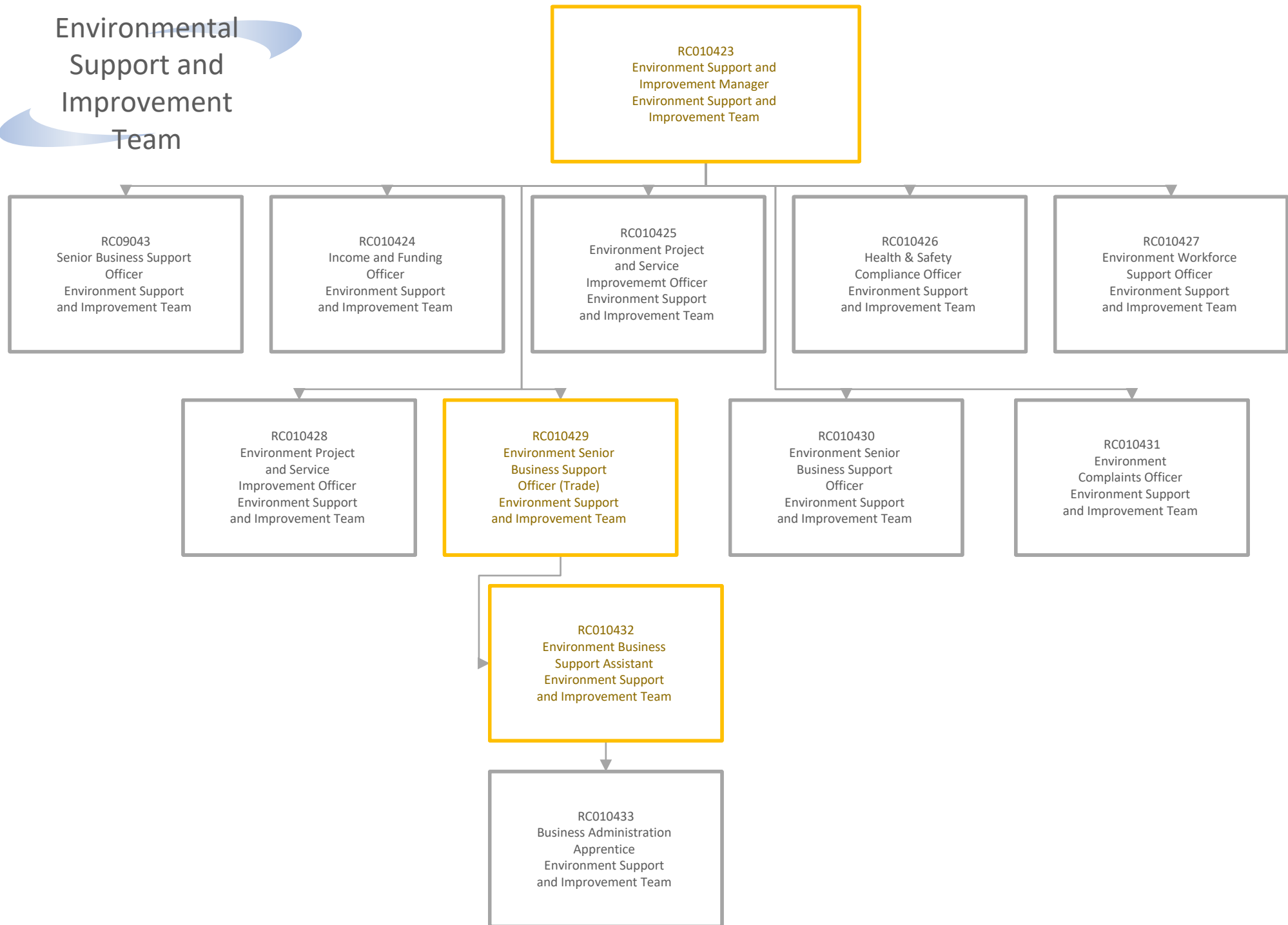


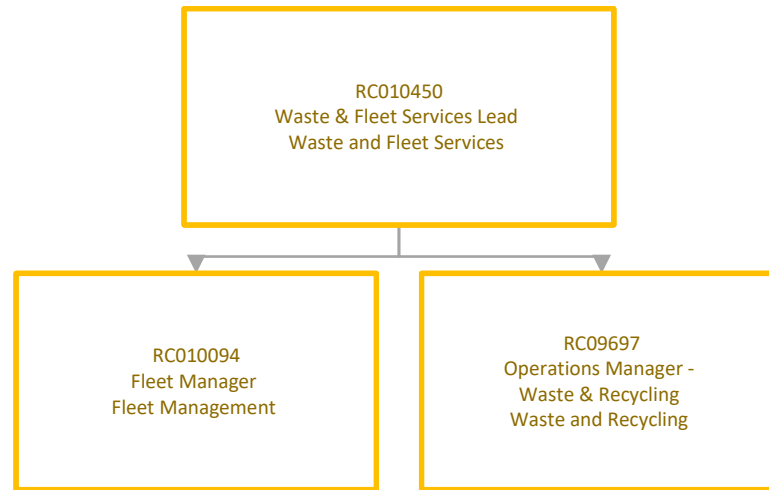


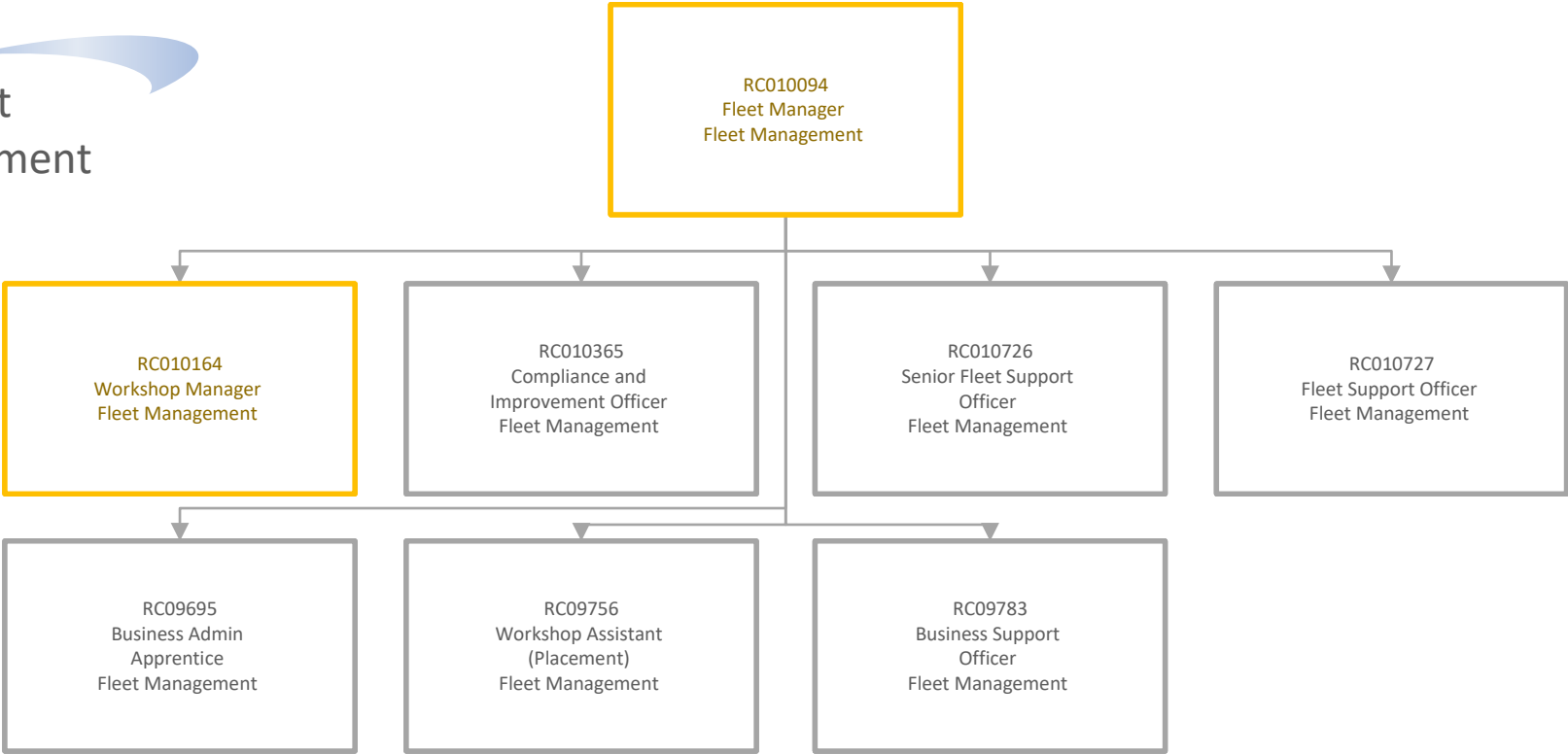
CCTV and Security

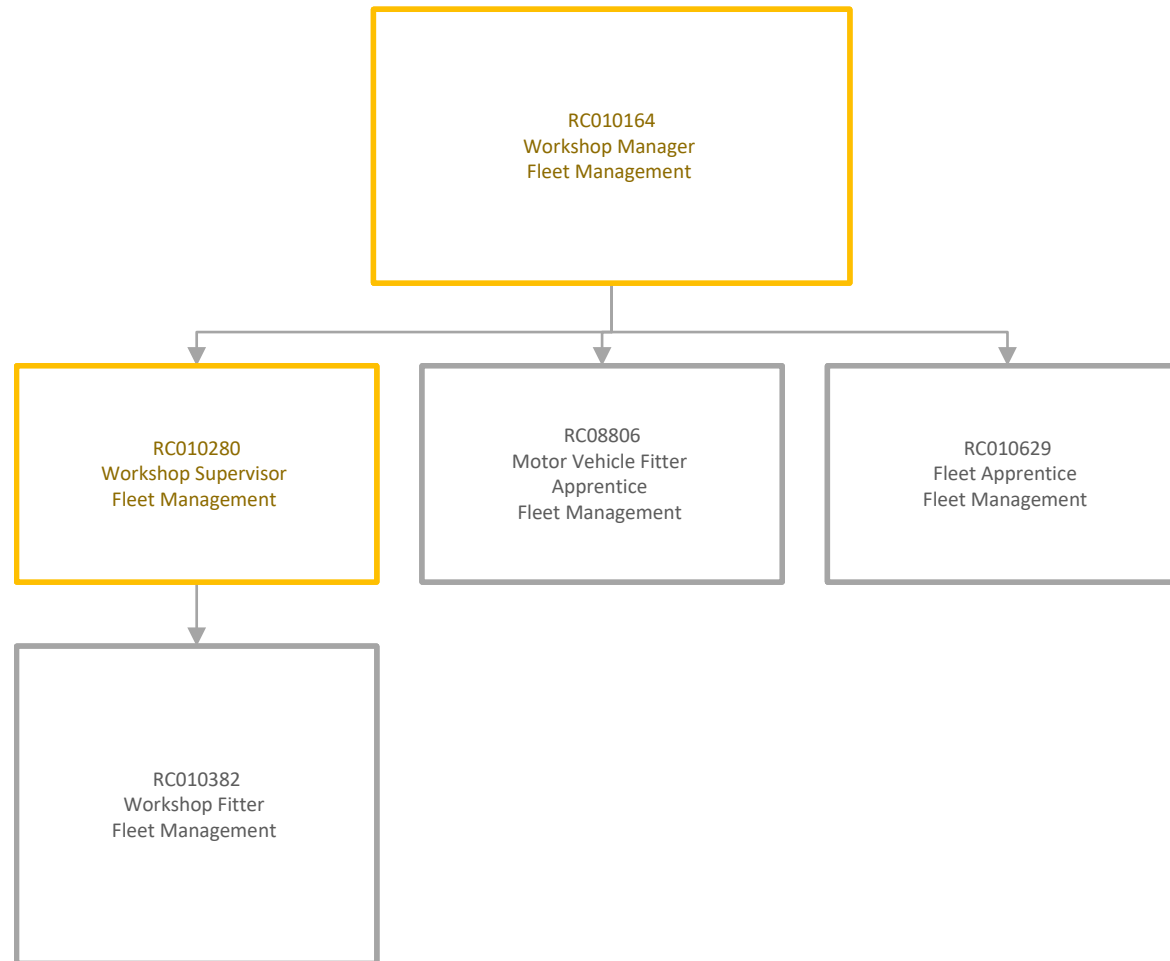


Environmental Support and Improvement Team



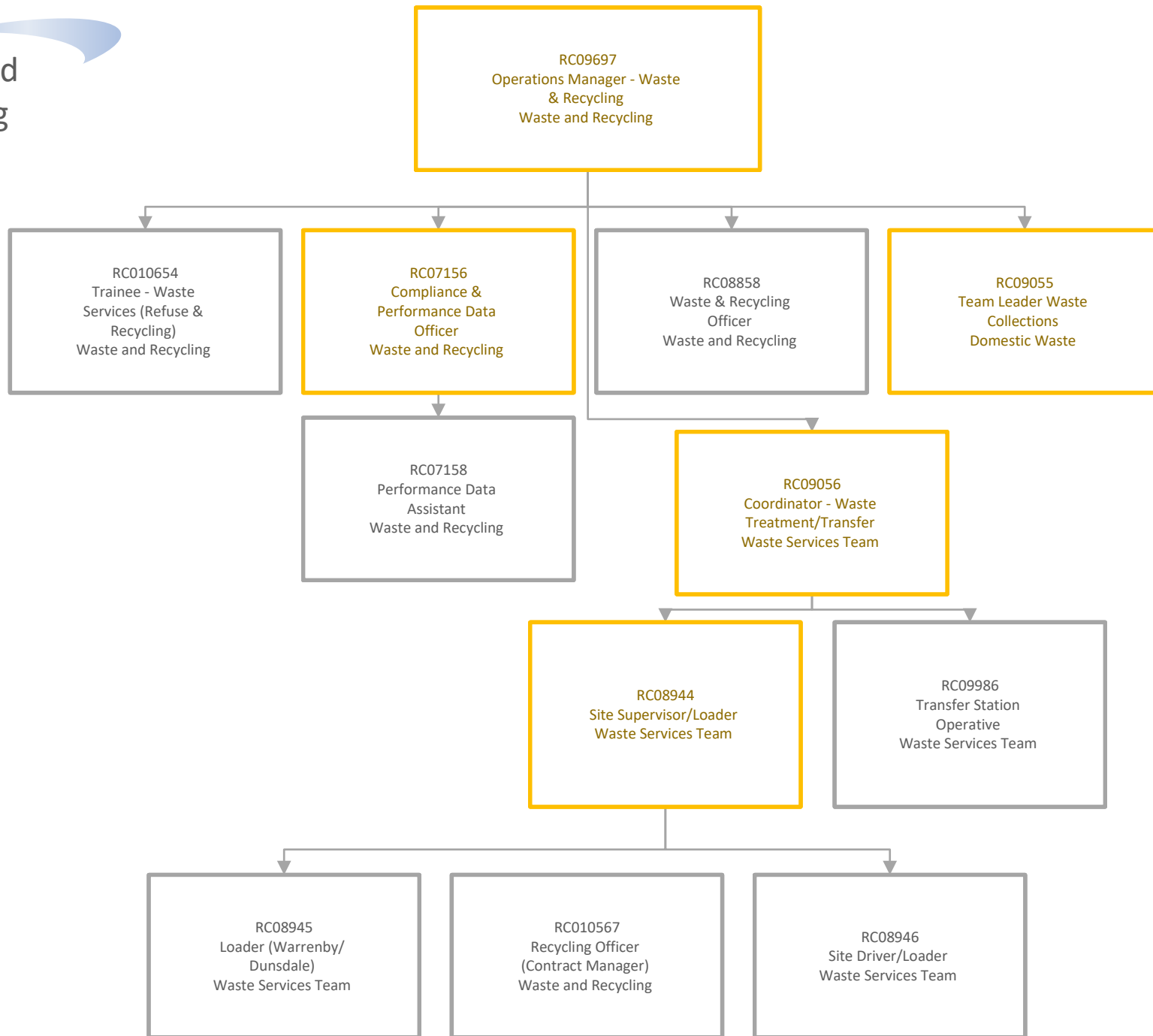




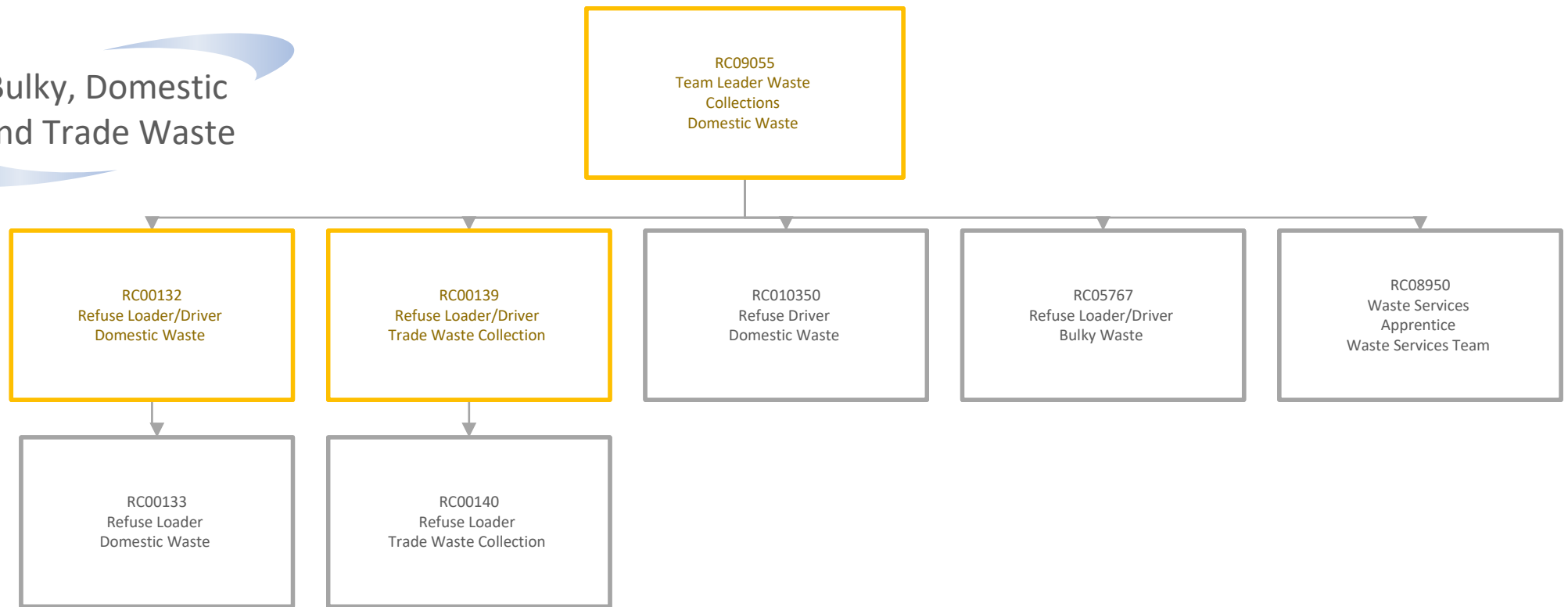




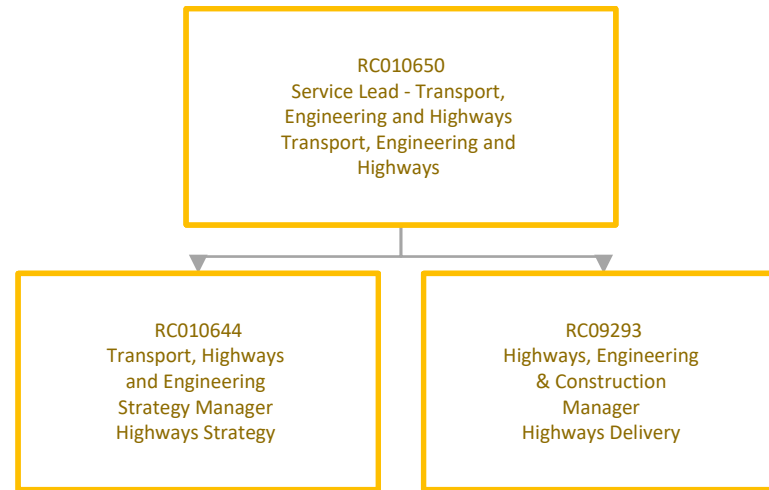
Waste and Recycling



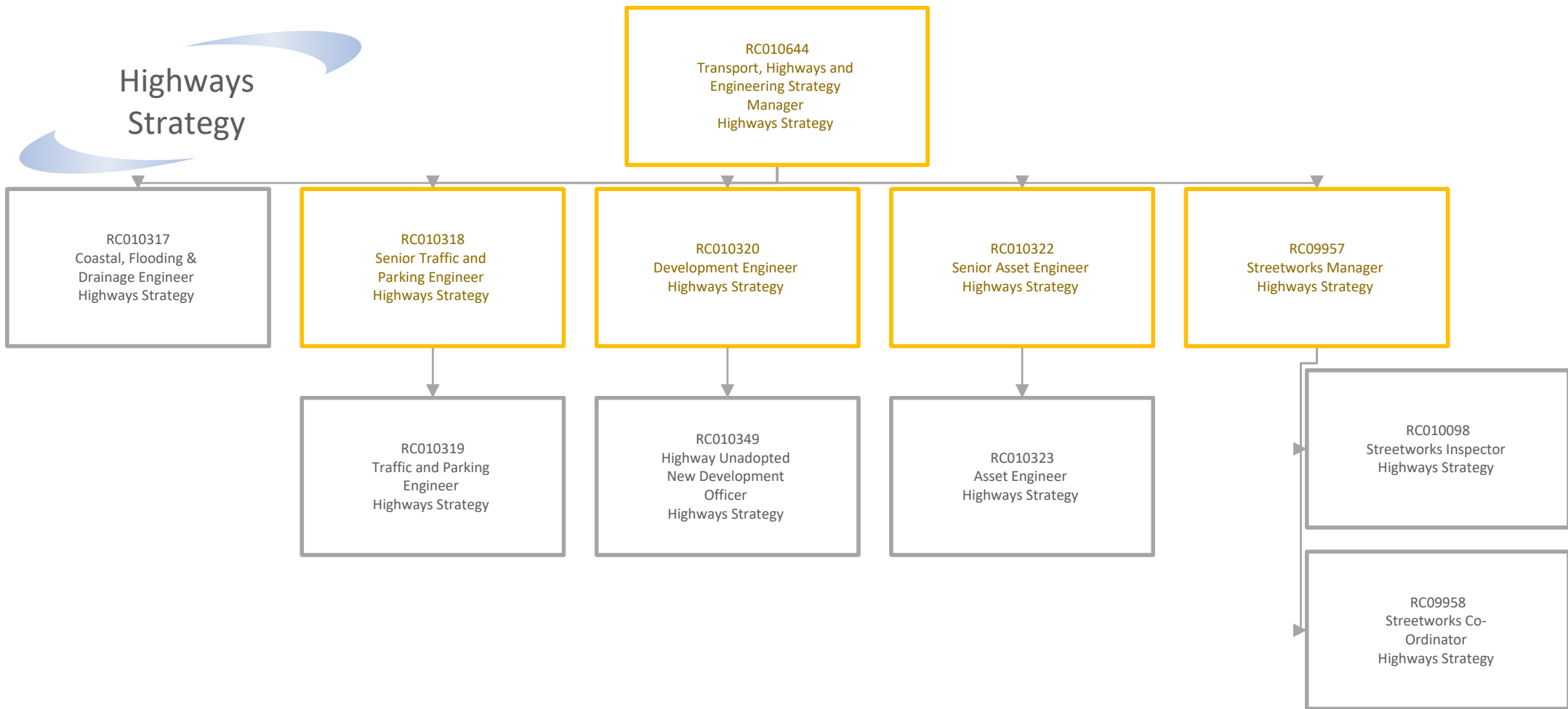
Bulky, Domestic and Trade Waste



Transport, Engineering and Highways



Highways Strategy



Highways Delivery

