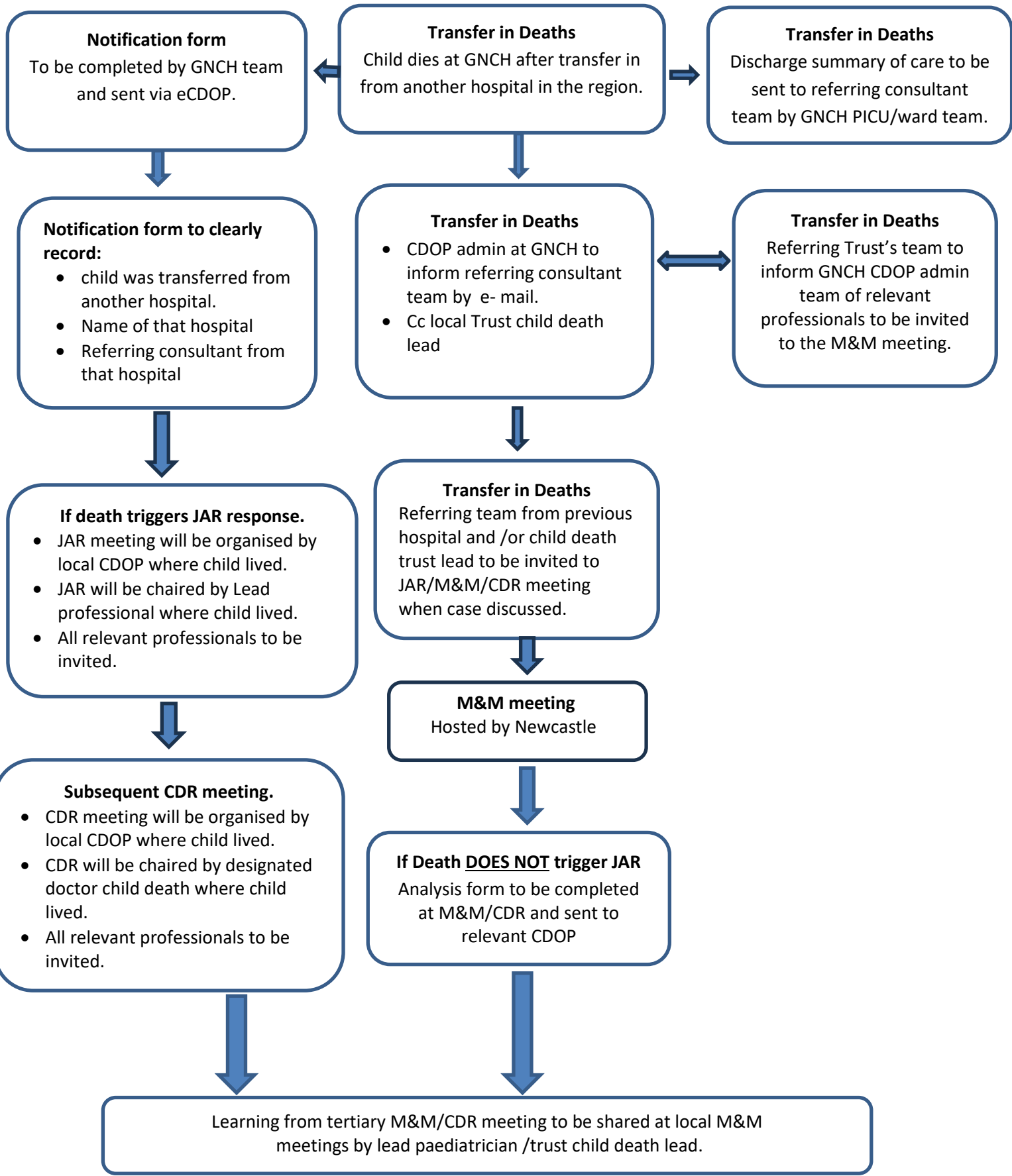


**Process for a child dying at Newcastle PICUs/wards following transfer from regional children's units.**





## Process for a child dying at Newcastle PICUs/wards following transfer from regional children's units.

### Contacts

GNCH Trust Child death Lead - [anna.thorley2@nhs.net](mailto:anna.thorley2@nhs.net)

GNCH PICU department child death lead - [aimee.foster@nhs.net](mailto:aimee.foster@nhs.net)

North of Tyne CDOP Coordinator - (GNCH, RVI, Freeman Hospitals) [jillrennie2@nhs.net](mailto:jillrennie2@nhs.net)

GNCH child death admin – Rina Sajawal - (GNCH, RVI, Freeman hospitals) - [r.sajawal@nhs.net](mailto:r.sajawal@nhs.net)

Tees Designated Doctor for Child Death - [Jayaraj@nhs.net](mailto:Jayaraj@nhs.net)

South tees NHS foundation trust child death lead – [rosemary.thwaites@nhs.net](mailto:rosemary.thwaites@nhs.net)

North Tees Child death lead - [shashwat.saran1@nhs.net](mailto:shashwat.saran1@nhs.net)

Tees CDRP Business Unit - Hartlepool, Middlesbrough, Stockton, Redcar & Cleveland, South Tees and North Tees Trusts – [Tees-cdrp@redcar-cleveland.gov.uk](mailto:Tees-cdrp@redcar-cleveland.gov.uk)