



Activities are **FREE** and all materials are provided.
Sessions are drop-in and children must be accompanied by an adult.

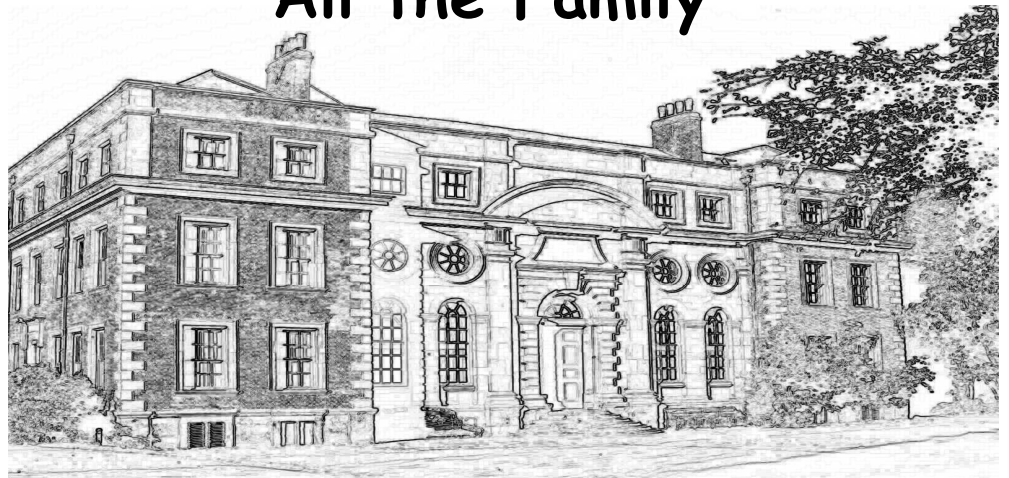


this is
Kirkleatham
MUSEUM • REDCAR

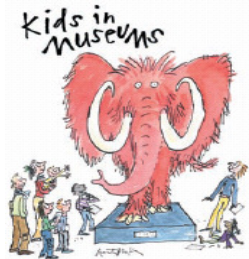
Half Term

11th—19th February 2012

Crafts and Activities for All the Family



 **this is Redcar & Cleveland**



We Support
Kids in Museums
encouraging a
family friendly visit



Opening Times

Tuesday-Sunday 10.00 am - 4.00 pm
Closed Mondays

FREE ADMISSION

FREE CAR PARK

DISABLED ACCESS

LILLIE'S CAFÉ

PICNIC AREA

PLAY AREA



Kirkleatham Museum, Redcar, Yorkshire TS10 5NW
Telephone: 01642 479500 Fax: 01642 474199
E-Mail: liz.vine@redcar-cleveland.gov.uk
www.redcar-cleveland.gov.uk/museums



Registered Museum No. 368



NEW for 2012

Victorian School Room Exhibition

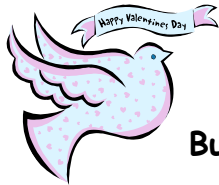
What was school like 120 years ago? Visit our exhibition and try it out. Can you follow all the rules?



Family Craft Workshops

10 am—4 pm

Activities are 50p each and all materials are provided. Sessions are drop-in and children must be accompanied by an adult.

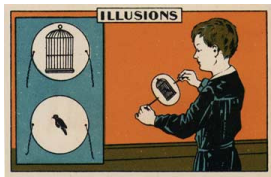


Tues 14th February

Victorian Valentine Gifts

Butterfly Card: Puzzle Purse: Rainbow Birds: Love Tokens Box: Love Heart Pocket.

The practice of sending gifts and cards on St. Valentine's day flourished in the 1800's and though more and more cards were available to buy, ready-made, many people still made their own. Try your hand at making some traditional cards and gifts to send to your Valentine today!



Thurs 16th February

Victorian Moving Picture Toys Thaumatrope, Phenakistoscopes and Whizzgigs

Long before film and television was invented, Victorian children had toys that gave the illusion of moving and changing pictures. They are just as surprising today as they were 150 years ago. Design and make your very own modern version of these 'scientific toys'.



Quizzes & Treasure Trails

Throughout the holidays you can be a Museum Detective and go on a mystery trail around the Museum

Plus

Give your brain a work out with word-searches, mazes and crosswords.



Wednesday Activity Sessions for Groups

Calling all Playschemes, Out-of-School Groups, Nurseries, Brownies, Beavers, Cubs...Would you like a half-day of activities at the Museum? Organised groups may book in on Wednesdays of school holidays for craft activities, games, quizzes and treasure hunts organised SPECIALLY for your group. For more information and to make a booking please contact the Museum Education Officer.



Museum Explorer Family Backpacks & 'Memories of Childhood' - Traditional Games Boxes

A fun and interesting way for your family to get more out of your visit. Explore the Museum and grounds with *Explorer Eddie the Museum Teddy*.

OR

Introduce your children to your favourite childhood games with the loans boxes. Backpacks and boxes may be borrowed for up to 2 hours, but don't forget to bring Explorer Eddie back! (A returnable deposit is required for loan of the backpacks and games boxes).