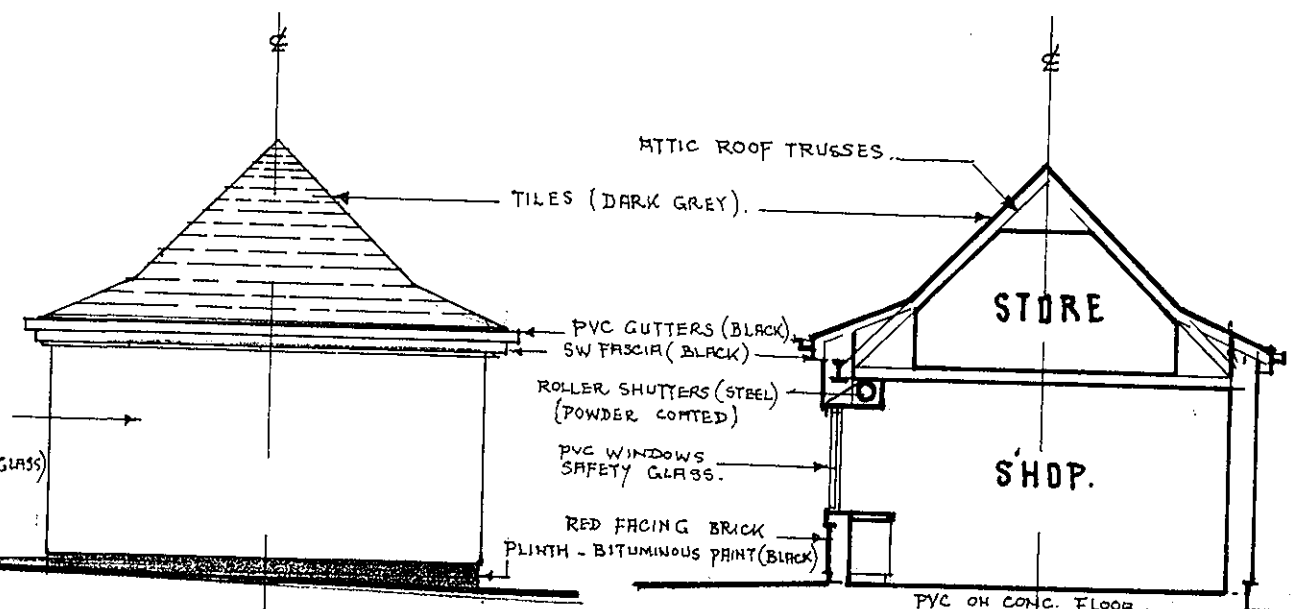


FRONT ELEVATION . W.

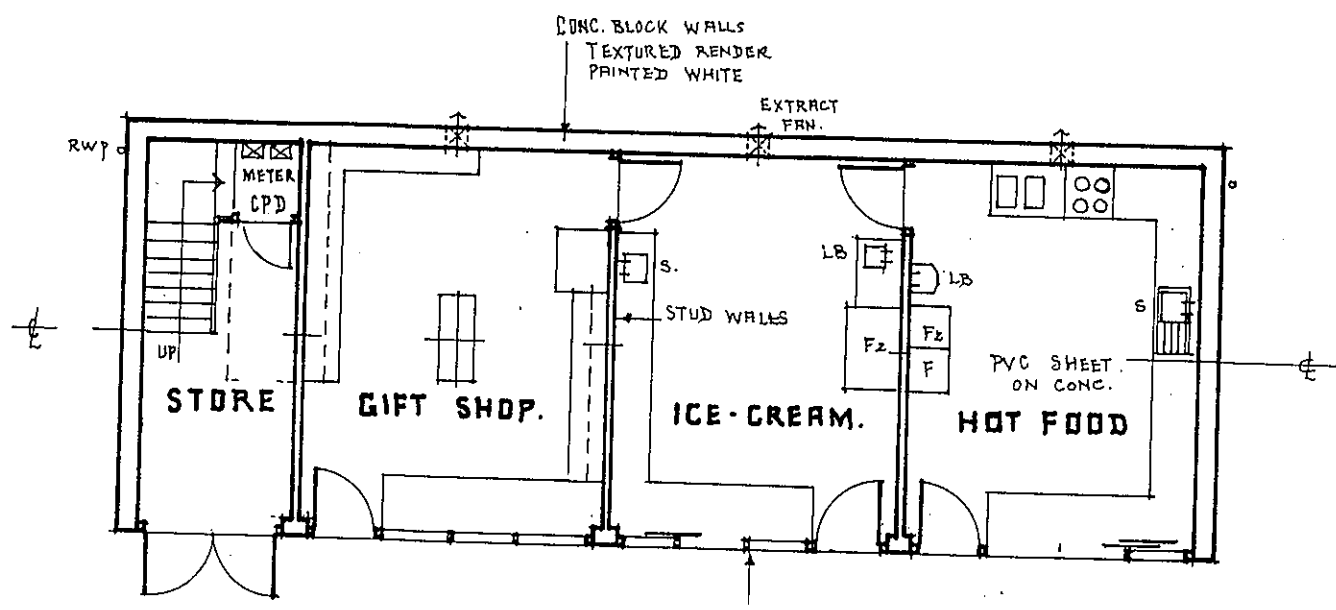
- SW FASCIA WITH SIGNAGE
- TEXTURED RENDER (PAINTED WHITE)
- PVC WINDOWS (SAFETY GLASS)
- RED FACING BRICK



SIDE ELEVATION . S.

SECTION.

- ATTIC ROOF TRUSSES
- TILES (DARK GREY)
- PVC GUTTERS (BLACK)
- SW FASCIA (BLACK)
- ROLLER SHUTTERS (STEEL) (POWDER COATED)
- PVC WINDOWS (SAFETY GLASS)
- RED FACING BRICK
- PLINTH - BITUMINOUS PAINT (BLACK)



PLAN.

APPROVED PLAN

BEACH CAFE. CAT NAB. SALT BURN.		
PROPOSED NEW BUILDING FOR MRS. E. VERNON.		
PLAN. ELEVATIONS + SECTION.		
SCALE - 1:100	DATE - JUNE '06	DWG NO. - 06.152.3
ARCHITECT - COLIN SILVESTER. RIBA.		
57 UPLEATHAM ST., SALT BURN-BY-SEA. CLEVELAND. TS12 1LR		

R. 11/7/06 CC